



SXL5

TYPICAL APPLICATIONS Vacuum cleaners, washing machines, dishwashers, hydrocleaners

FUNCTIONS ■ SPST, momentary or not
■ DPST, momentary or not

CYCLE No. 50.000

CUT OUT Rear panel

AMBIENT TEMPERATURE 125 °C

GWT 850 °C

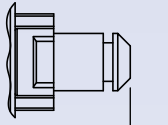
GWT NO FLAME (<2sec) 750 °C



S X L 5 ?

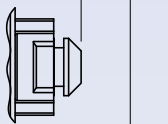
TRAVEL POSITION

OFF position



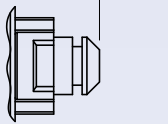
Max travel

5,1 ±0,2



ON position

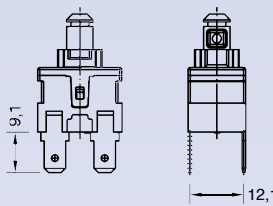
3,2 ±0,2



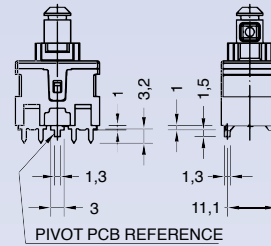
DRAWING

1

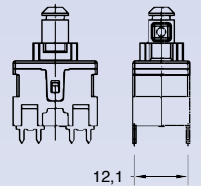
Vertical tab terminals



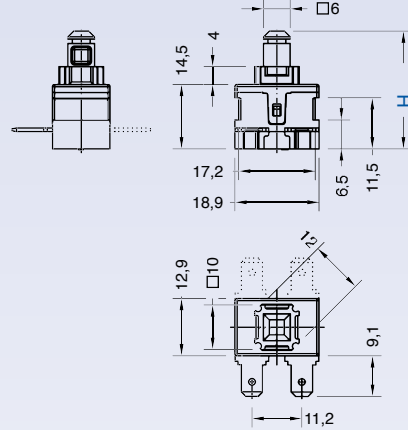
Vertical PCB terminals
Single pole version



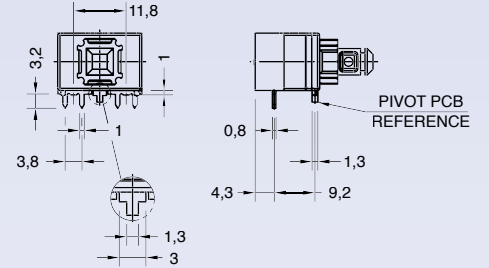
Double pole version



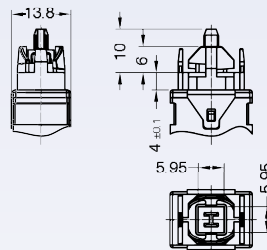
Horizontal tab terminals



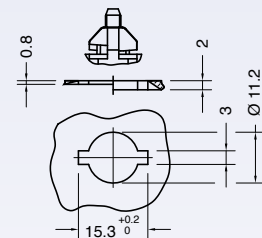
Horizontal PCB terminals



2

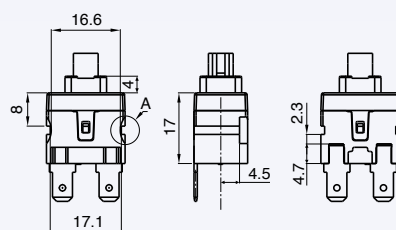


Wings fixing

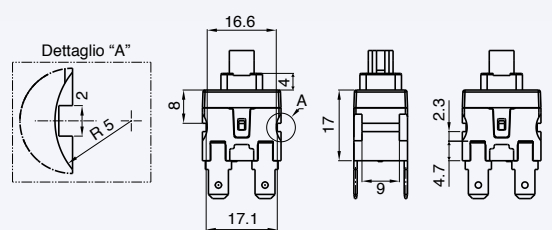


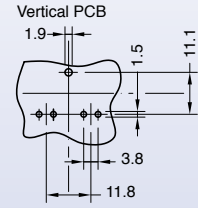
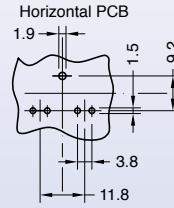
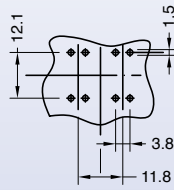
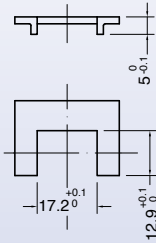
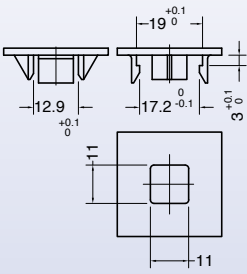
3

Single pole version



Double pole version





DRAWING TERMINAL SHAFT FUNCTION RATING

S	X	L	5						0	0	0	W
---	---	---	---	--	--	--	--	--	---	---	---	---

?

?

?

?

0 0 0 W

TERMINAL

SHAFT

FUNCTION

RATING

1 Drawing 1 - 2 - 3
Vertical terminal
6.3x0.8



A Drawing 1 - 3
Horizontal terminal
6.3x0.8



2 Drawing 1 - 2 - 3
Vertical terminal
4.8x0.8



B Drawing 1 - 3
Horizontal terminal
4.8x0.8



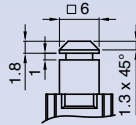
4 Drawing 1 - 2
Vertical PCB terminal



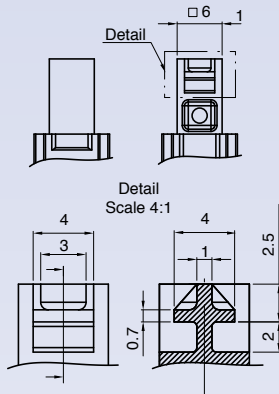
D Drawing 1
Horizontal PCB terminal
only function 1 - 4



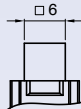
A H = 26.5 Except SXL53



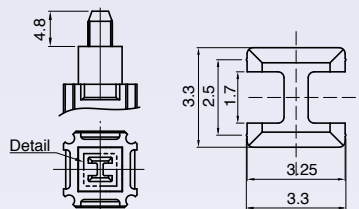
B H = 28.5



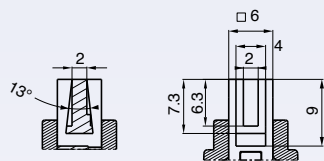
C H = 24 Except SXL53



D H = 28.5



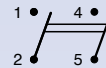
E H = 26.5



1



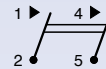
2



4



7



H

12 (8) A / 250 VAC
16 (4) A / 250 VAC
10 (6) A / 250 - 5E4
T125/55 °C
EN 61058 / CQC

16 A - 125 / 250 VAC
3/4 HP - 125 / 250 VAC
T100 °C
UL 1054

9

12 (8) A / 250 VAC - 5E4
T85/55 °C
EN 61058

16 A - 125 / 250 VAC
3/4 HP - 125 / 250 VAC
T100 °C
UL 1054