

客户 (Customer): _____

发行编号: 2014092701

发行日期: 2014.09.27

发行区分: 新规 改定

规格承认书

SPECIFICATION FOR APPROVAL

产品名称: 7x7 self lock

贵司型号: _____

敝司型号: PS7001 (自锁)

接受印

兹证明此份材料已经收到。

ACKNOWLEDGEMENT

WE ACKNOWLEDGE RECEIVING THIS DOCUMENT.

MONTH / DAY / YEAR

DATE: / /

G. MGR	LEADER	CHECKED	SIGNED

浙江键富电子有限公司
ZHEJIANG JIANFU ELECTRONICS CO., LTD

地址:浙江省乐清市天成工业区宁康东路 2892 号
TEL: 0577-61302509 61302221
FAX: 0577-61300308 61301196

发行部门: 技术部
TEL: 0577-61302509转8008
FAX: 0577-61300308

拟制	核对	审核	批准
研发部 14.10.14 洪启文	研发部 14.10.14 王晓框	品管部 14.10.14 柴利爽	总经办 14.10.14 赵高杰

JIANFU

规格承认书			规格书编号 2014092701
品名	7x7 Self lock	型号	PS7001 (自锁) 1/6

1.General specification 基本说明

1.1 Scope 范围 This specifications apply to the specific requirements and tests of the general technical features for 7*7 push button switch series,此规格适用于 7*7 按键开关系列的主要技术特性要求及测试

1.2 Operating Temperature Range 使用温度范围
-40 to+85°C(normal humidity, normal press.) 正常湿度, 标准压力

1.3 Storage Temperature Range 保存温度范围
-40 to+85°C(normal humidity, normal press.)

1.4 Test Conditions 测试条件

Tests and measurements shall be made in the following standard conditions unless otherwise specified: 测试和计量按下列标准条件除非特殊说明

Normal temperature (temperature 5 to 35°C) 标准温度

Normal humidity (relative humidity 45 to 85%) 正常湿气

Normal pressure (pressure 860 to 1060 mbars) 标准压力

In case any question arises from the judgment made, tests shall be conducted in the following conditions:

Temperature (5°C~35°C) 温度

Relative humidity (45%~85%) RH 相对湿度

Pressure (860 to 1060 mbars) 压力

2.TYPE OF ACTUATION 动作类型

Self lock_自锁

3.CONTACT ARRANGEMENT 4 poles_2_throws 接触形式 4 接点 2 回路

(Details of contact arrangement are given in the assembly drawings.)
细接点形式在装配图中

4.MAXIMUM RATINGS DC 30 V 100 mA 最大额定值

DC 2 V 10 μ A 最小额定值

规格承认书

规格书编号

2014092701

品名

7x7 Self lock

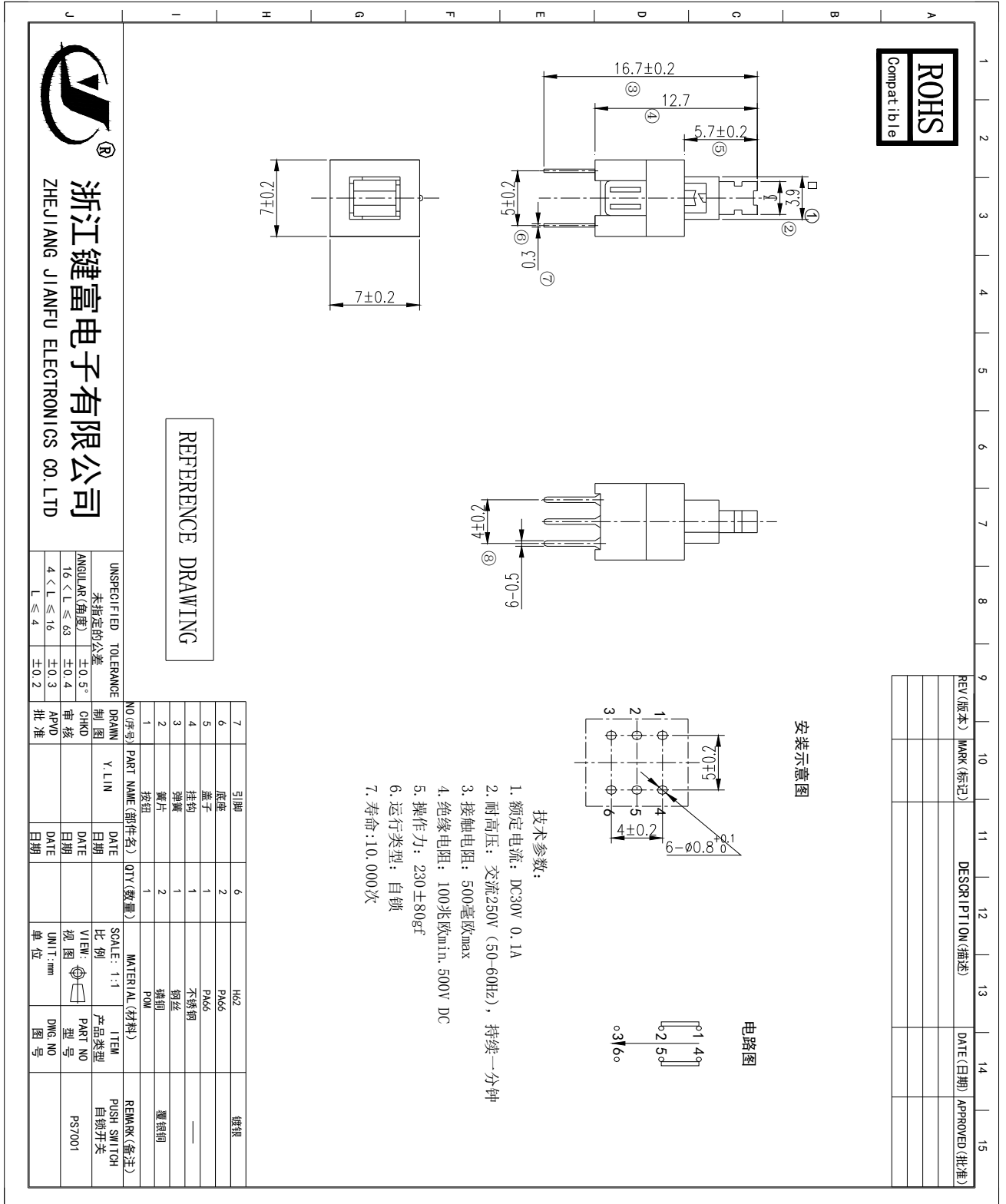
型号

PS7001 (自锁)

2/6

5. 外形、结构:

5.1 外形图:



规格承认书

规格书编号
2014092701

品名

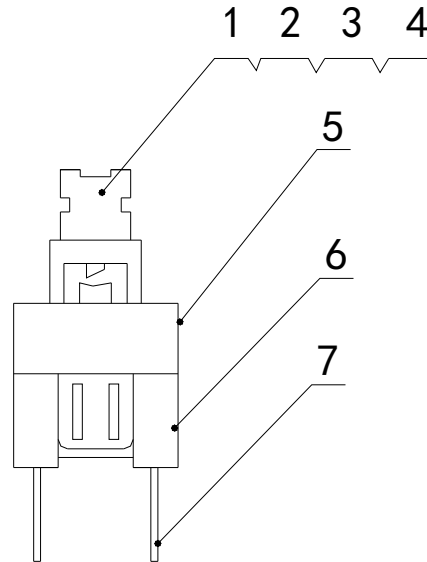
7x7 Self lock

型号

PS7001 (自锁)

3/6

5.2 构造:



零部件名称	数量	材料名称	表面处理	备注
按钮	1	POM		蓝色
簧片	2	磷铜	覆银铜	
弹簧	1	钢丝		
挂钩	1	不锈钢		
盖子	1	PA66		
底座	2	PA66		
引脚	6	H62	镀银	

规格承认书

规格书编号

2014092701

品名

7x7 Self lock

型号

PS7001 (自锁)

4/6

6. Reliability trial 可靠性测试

Item 项目		Test Condition 测试条件	Requirements 要求
6.1	Contact Resistance 接触电阻	Applying static load twice the actuating force to the center of the stem, measurements shall be made with a 100mA small-current contact resistance meter. 用两倍的动作用力作静负载施加于按钮的中心,并用100mA小电流接触电阻仪测量	100mΩ 以下
6.2	Insulation Resistance 绝缘电阻	Measurements shall be made following application of DC500V potential between terminals and between individual terminals and frame for one minute.在端子与端子之间,端子与外壳之间施加 DC500V,一分钟	100MΩ 以上
6.3	Dielectric withstanding voltage 电气耐压	AC 250 V (50Hz or60Hz) shall be applied between terminals and between individual terminals and frame for one minute. 在端子与端子之间,端子与外壳之间施加 AC250V(50HZ-60HZ)	There shall be no breakdown. 无击穿、闪烁现象
6.4	Actuating Force 动作力	Place the switch such that the direction of switch operation is vertical and then gradually increase the load applied to the center of the stem, the maximum load required for the stem to come to a stop shall be measured.开关的动作方向为垂直放置开关向推柄中心逐渐地增加负荷直到推柄停止时所测量的最大负荷	<u>230</u> ± <u>80</u> gf

规格承认书

规格书编号
2014092701

品名	7x7 Self lock	型号	PS7001 (自锁)	5/6
----	---------------	----	-------------	-----

Item 项目	Test Condition 测试条件	Requirements 要求
6.5	<p>Moisture Resistance 耐潮湿</p> <p>Following the test set forth below the sample shall be left in normal temperature and humidity conditions for one hour before measurements are made: 样品按下列条件进行耐潮湿试验,试验后在正常温度和湿度条件下放置 1 小时后测定</p> <p>(1) Temperature: 40±2℃ 温度 (2) Relative humidity: 90 to 95% 相对湿度 (3) Time: 96 hours 时间</p> <p>Water drops shall be removed. 擦除水珠</p>	<p>Contact resistance: <u>500</u> mΩ Max. 接触电阻 Insulation resistance : <u>50</u> MΩ Min. 绝缘电阻</p>
6.6	<p>Low Temperature Resistance 耐低温</p> <p>Following the test set forth below the sample shall be left in normal temperature and humidity conditions for one hour before measurements are made: 样品按下列条件进行耐低温试验,试验后在正常温度和湿度条件下放置 1 小时后测定</p> <p>(1)Temperature: -25±3℃ 温度 (2) Time: 96 hours 时间</p> <p>Water drops shall be removed. 擦除水珠</p>	<p>Contact resistance: <u>500</u> mΩ Max. 接触电阻 Insulation resistance : <u>50</u> MΩ Min. 绝缘电阻</p>
6.7	<p>Heat Resistance 耐热</p> <p>Following the test set forth below the sample shall be left in normal temperature and humidity conditions for one hour before measurements are made: 样品按下列条件进行耐热试验,试验后在正常温度和湿度条件下放置 1 小时后测定</p> <p>(1)Temperature: 80±2℃ 温度 (2) Time: 96 hours 时间</p>	<p>Contact resistance: <u>500</u> mΩ Max. 接触电阻 Insulation resistance : <u>50</u> MΩ Min. 绝缘电阻</p>
6.8	<p>Salt Spray Test 盐雾试验</p> <p>The salt spray test shall be conducted at the following conditions : 样品按下列条件进行盐雾试验</p> <p>(1)Density(浓度): 溶液(5±1)% NaCl (质量百分比) (2)Temperature: 35±2℃ 温度 (3) Time: 24 hours 时间</p>	<p>金属件无发黄、生锈</p>

规格承认书

规格书编号
2014092701

品名

7x7 Self lock

型号

PS7001 (自锁)

6/6

Item 项目		Test Condition 测试条件	Requirements 要求
6.9	可焊性测试 Solder ability Test	端子顶部被浸入焊锡炉中, 温度为 $240 \pm 5^{\circ}\text{C}$ 时间 3 ± 0.5 秒 The top of the terminals shall be dipped in the solder bath at $240 \pm 5^{\circ}\text{C}$ for 3 ± 0.5 seconds	引脚至少 90% 上锡 90 percent of terminals shall be dipped
7.0	耐焊接热试验 Resistance to Soldering-heat Test	端子焊接部分浸入焊锡炉, 焊炉温度 $260 \pm 5^{\circ}\text{C}$, 焊接时间 5 ± 1 秒。(焊接时不可于端子施加外力) Terminals shall be dipped in the solder bath at $260 \pm 5^{\circ}\text{C}$ for 5 ± 1 seconds without additional force for	本体无变形, 能满足于机械, 电气性能 Appearance should be not electrical and mechanical characteristics shall be satisfied