



小型波动开关  
小型带灯波动开关

Miniature Rocker Switch

Miniature Illuminated Rocker Switch

MRS Series  
MIRS Series



RoHS

## 型号说明 Ordering Information

MRS-102A-2C7-R/B

- 基座颜色 Base color
- 盖帽颜色 Cap color
- 盖帽标记 Cap marking
- 产品序号 Product order
- 规格 Rating
- 电路特性 Circuitry trait
- 刀数 Poles
- 小型带灯波动开关 Miniature Illuminated Rocker Switch
- 小型波动开关 Miniature Rocker Switch

## 技术特性 Specification

- 1.规格 Rating: ( )6A 125VAC;3A 250VAC  
(A)10A 125VAC;6A 250VAC
- 2.接触电阻 Contact Resistance:35mΩ max
- 3.绝缘电阻 Insulation Resistance:500VDC 100MΩ min
- 4.耐电压 Dielectric Strength:1500VAC, 1Minute
- 5.操作温度 Operating Temperature:-25°C ~ +85°C
- 6.电气寿命 Electrical Life:10,000 Cycles

### 电路特性 Circuitry trait

01	ON	—	OFF
02	ON	—	ON
11	(ON)		OFF
12	ON	—	(ON)
03	ON	OFF	ON
13	ON	OFF	(ON)
23	(ON)	OFF	(ON)

( ):回弹指示 Indicates Momentary

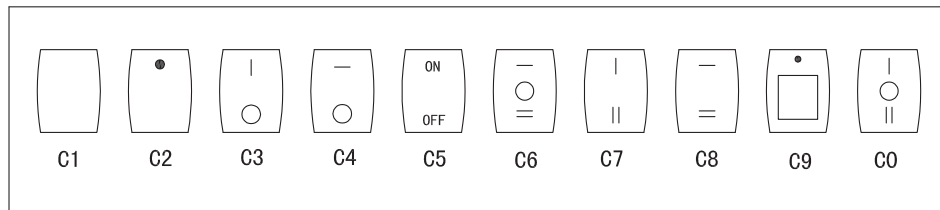
### 盖帽颜色 Cap color

- 黑 Black (B)
- 白 White (W)
- 红 Red (R)
- 黄 Yellow (Y)
- 绿 Green (G)
- 蓝 Blue (BL)
- 桔黄 Orange (O)
- 灰 Gray (GR)

### 基座颜色 Base color

- 黑 Black (B)
- 白 White (W)
- 灰 Gray (GR)

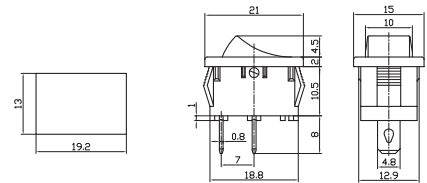
### 盖帽标记 Cap marking



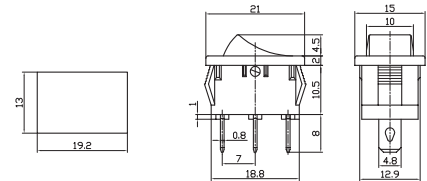
### 防水罩 Water proof cap



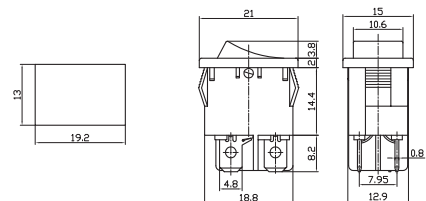
MRS-101 ON-OFF  
MRS-111 (ON)-OFF  
MRS-101A ON-OFF  
MRS-111A (ON)-OFF  
SPST 2P



MRS-102 MRS-102A ON-ON  
MRS-103 MRS-103A ON-OFF-ON  
MRS-112 MRS-112A ON-(ON)  
SPDT 3P



MRS-2-101-2 ON-OFF  
MRS-2-101A-2 ON-OFF  
SPST 2P  
MIRS-101 ON-OFF  
MIRS-101A ON-OFF  
SPST 3P





小型波动开关

Miniature Rocker Switch

MRS Series

小型带灯波动开关

Miniature Illuminated Rocker Switch

MIRS Series

	<p>MIRS-201 ON-OFF  MIRS-201A ON-OFF  MRS-201-2 ON-OFF  MRS-201A-2 ON-OFF  DPST 4P</p>	
	<p>MIRS-101-2 ON-OFF  10A 125VAC; 6A 250VAC  SPST 3P</p>	
	<p>MRS-101-2 ON-OFF  MRS-101A-2 ON-OFF  SPST 2P</p>	
	<p>MRS-102-2 MRS-102A-2 ON-ON  MRS-103-2 MRS-103A-2 ON-OFF-ON  MRS-113-2 MRS-113A-2 ON-OFF-(ON)  MRS-123-2 MRS-123A-2 (ON)-OFF-(ON)  SPDT 3P</p>	
	<p>MRS-101L-2 ON-OFF  MRS-101AL-2 ON-OFF  SPST 2P</p>	
	<p>MRS-102L-2 ON-ON  MRS-102AL-2 ON-ON  MRS-103L-2 ON-OFF-ON  MRS-103AL-2 ON-OFF-ON  SPDT 3P</p>	
	<p>MIRS-101-3+LED ON-OFF  6A 125VAC; 3A 250VAC  SPST 4P</p>	



小型波动开关 Miniature Rocker Switch  
 小型带灯波动开关 Miniature Illuminated Rocker Switch

MRS Series  
 MIRS Series

	<p><b>MRS-101A-4</b> ON-OFF          10A 125VAC; 6A 250VAC          SPST 2P</p>	
	<p><b>MRS-102A-4</b> ON-ON  <b>MRS-103A-4</b> ON-OFF-ON          10A 125VAC; 6A 250VAC          SPDT 3P</p>	
	<p><b>MRS-101-5</b> ON-OFF  <b>MRS-111-5</b> (ON)-OFF          10A 125VAC; 6A 250VAC          SPST 2P</p>	
	<p><b>MRS-102-6</b> ON-ON          12A 125VAC; 6A 250VAC          SPDT 3P</p>	
	<p><b>MRS-101-7</b> ON-OFF          10A 125VAC; 6A 250VAC          SPST 2P</p>	
	<p><b>MRS-101-8</b> ON-OFF          13A 125VAC; 6.5A 250VAC          SPST 2P</p>	
	<p><b>MIRS-101-8</b> ON-OFF          SPST 3P  <b>MRS-102-8</b> ON-ON  <b>MRS-103-8</b> ON-OFF-ON          13A 125VAC; 6.5A 250VAC          SPDT 3P</p>	



小型波动开关  
小型带灯波动开关

Miniature Rocker Switch  
Miniature Illuminated Rocker Switch

MRS Series  
MIRS Series

	<p><b>MRS-101-9</b> ON-OFF 10A 125VAC;6A 250VAC SPST 2P</p>	
	<p><b>MIRS-101-9</b> ON-OFF SPST 3P <b>MRS-102-9</b> ON-ON <b>MRS-103-9</b> ON-OFF-ON 10A 125VAC;6A 250VAC SPDT 3P</p>	
	<p><b>MRS-101-9H</b> ON-OFF 10A 125VAC;6A 250VAC SPST 2P</p>	
	<p><b>MIRS-101-9H</b> ON-OFF SPST 3P <b>MRS-102-9H</b> ON-ON <b>MRS-103-9H</b> ON-OFF-ON 10A 125VAC;6A 250VAC SPDT 3P</p>	
	<p><b>MRS-101-10</b> ON-OFF 10A 125VAC;6A 250VAC SPST 2P</p>	
	<p><b>MIRS-101-10</b> ON-OFF 10A 125VAC;6A 250VAC SPST 3P</p>	
	<p><b>MRS-103-12</b> 10A 125VAC;6A 250VAC <b>MRS-103A-12</b> 16A 125VAC;10A 250VAC ON-ON-OFF SPDT 3P</p>	



小型波动开关

小型带灯波动开关

Miniature Rocker Switch

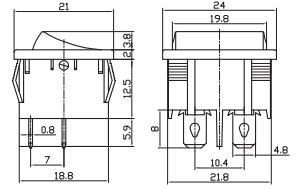
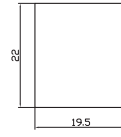
Miniature Illuminated Rocker Switch

MRS Series

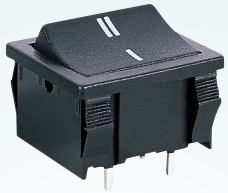
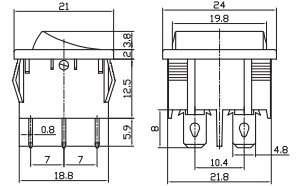
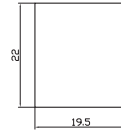
MIRS Series



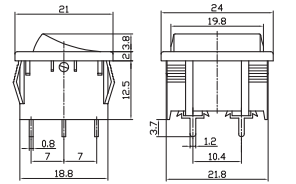
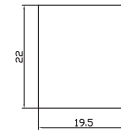
MRS-201 ON-OFF  
MRS-211 (ON)-OFF  
MRS-201A ON-OFF  
MRS-211A (ON)-OFF  
DPST 4P



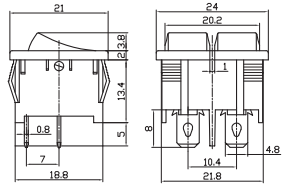
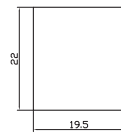
MRS-202 ON-ON  
MRS-203 ON-OFF-ON  
MRS-202A ON-ON  
MRS-203A ON-OFF-ON  
DPDT 6P



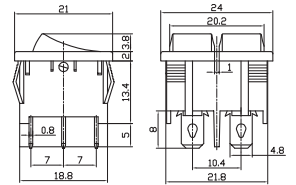
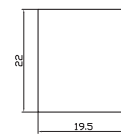
MRS-202P ON-ON  
MRS-203P ON-OFF-ON  
MRS-202AP ON-ON  
MRS-203AP ON-OFF-ON  
DPDT 6P



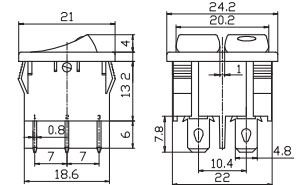
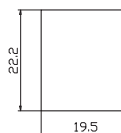
MRS-2101 ON-OFF  
MRS-2111 (ON)-OFF  
MRS-2101A ON-OFF  
MRS-2111A (ON)-OFF  
DPST 4P



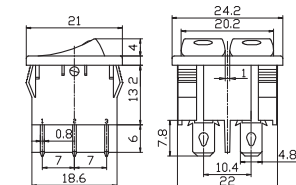
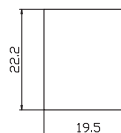
MRS-2102 ON-ON  
MRS-2103 ON-OFF-ON  
MRS-2102A ON-ON  
MRS-2103A ON-OFF-ON  
DPDT 6P



MIRS-101AE-111A ON-ON/(ON)-OFF  
20A 12VDC  
DPST 5P



MIRS-2101AE ON-OFF  
20A 12VDC  
DPST 6P





小型波动开关  
小型带灯波动开关

Miniature Rocker Switch

Miniature Illuminated Rocker Switch

MRS Series

MIRS Series

	<p><b>MRS-201-3</b> ON-OFF DPST 4P L1=3; 8 L2=5.5; 9</p>			
	<p><b>MRS-202-3</b> ON-ON <b>MRS-203-3</b> ON-OFF-ON DPDT 6P L1=3; 8 L2=5.5; 9</p>			
	<p><b>MIRS-201-4</b> ON-OFF <b>MRS-201-4</b> ON-OFF 10A 125VAC;6A 250VAC DPST 4P</p>			
	<p><b>MIRS-202-4</b> ON-ON 10A 125VAC;6A 250VAC DPDT 6P</p>			
	<p><b>MRS-201-5</b> ON-OFF <b>MRS-211-5</b> (ON)-OFF 10A 125VAC;6A 250VAC DPST 4P</p>			
	<p><b>MRS-202-5</b> ON-ON <b>MRS-203-5</b> ON-OFF-ON <b>MRS-212-5</b> (ON)-ON <b>MRS-213-5</b> (ON)-OFF-ON <b>MRS-223-5</b> (ON)-OFF-(ON) 10A 125VAC;6A 250VAC DPDT 6P</p>			
	<p><b>MIRS-101-5</b> ON-OFF 10A 125VAC;6A 250VAC SPST 3P</p>			