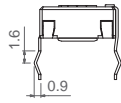


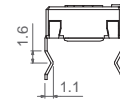
## Terminals

By default, terminals are always straight, as shown on the “models” section. ACP can provide crimped terminals (with snap in, “SNP” or “SNJ”) to better hold the component to the PCB during the soldering operation.

### SNP



### SNJ

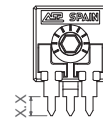
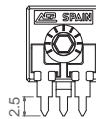
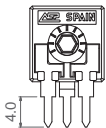


Also, there is an option of having shorter terminal tips:

### Standard Terminal

### Shorter terminal, for H5 TP25

### Shorter terminal, TPXX (under request)



## Possibilities for insertion of accessories

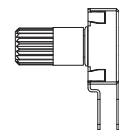
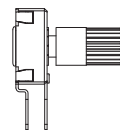
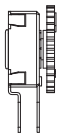
Accessories can be mounted on potentiometers through either the front side (WT) or the collector side (WTI). For the specific angular position of shafts with planes, a drawing with the exact position is requested.

### WT Front side

### WTI Collector side

### WT Front side

### WTI Collector side



## Shafts

Shafts are available in different colors (color chart in “how to order” section) and with self-extinguishable property, according to UL 94 V-0, under request. ACP can study special shaft designs.

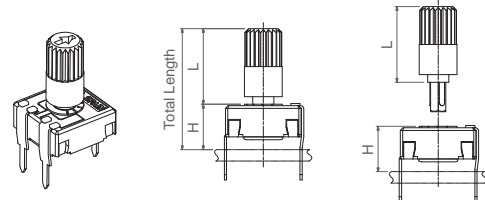
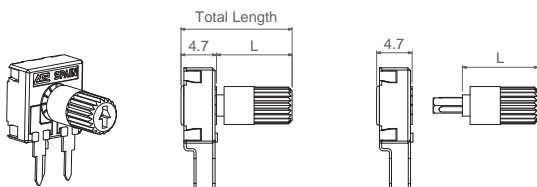
Shafts can be sold separately or delivered already mounted on the potentiometer at ACP.

Unless otherwise stated, the arrow in the shafts is in line with the wiper and it points to 50% when assembled with M rotors.

When a shaft is mounted on a potentiometer, the distance from the top of the potentiometer to the top of the shaft is marked with “L” in the table below, as shown in the drawings:

### H potentiometer + shaft

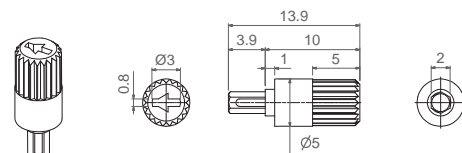
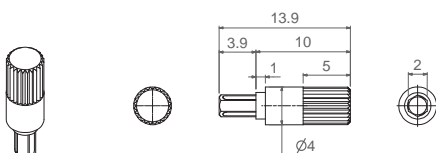
### V potentiometer + shaft



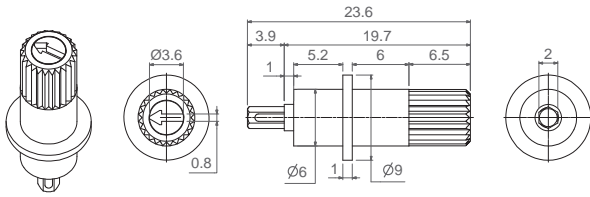
Shaft	9071	9067	9072	9074	9054	9004	9005	9064	9055	9070	9076	9053	9018	9039	9048	9056	9009	9059	9063	9010	9051	9006	9019	9073	9020	9047
L Dimension	3.5	5.5	6.5	9.3	9.5	10	10	10	10.8	11.9	12	12.1	12.8	12.8	12.8	12.8	14.5	14.5	14.5	15	15	19.7	19.9	25.5	25.9	29.8

### 9004

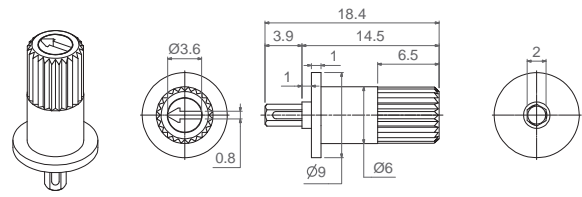
### 9005



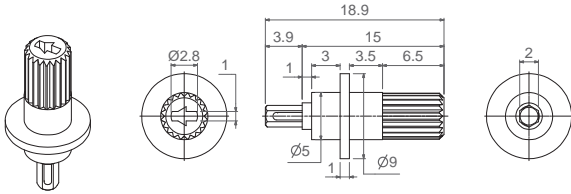
9006



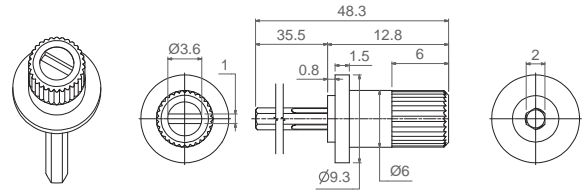
9009



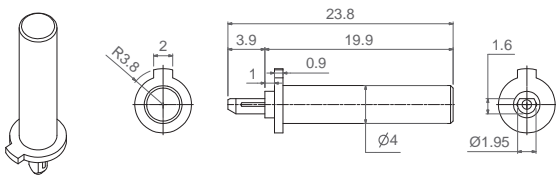
9010



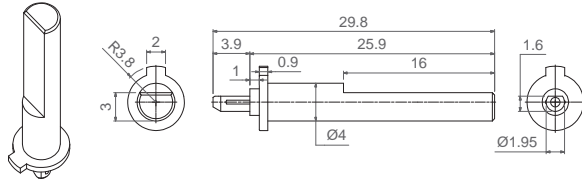
9018 (for 6 ganged potentiometers)



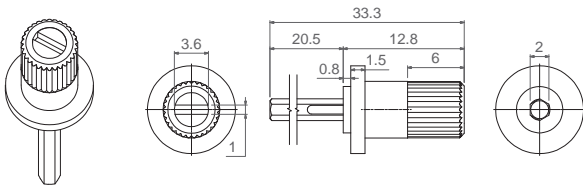
9019 (Designed for D rotor)



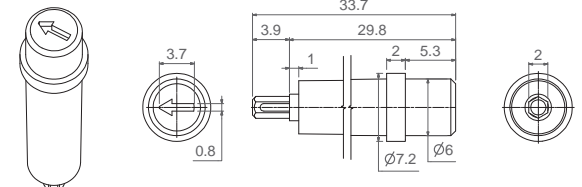
9020 (Designed for D rotor)



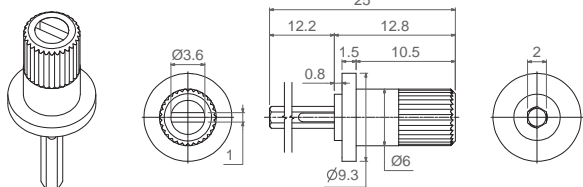
9039 (for 4 ganged potentiometers)



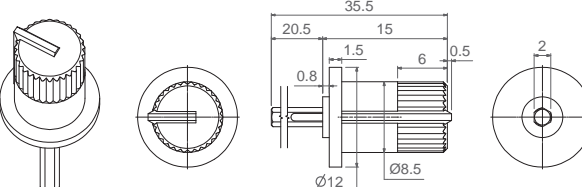
9047



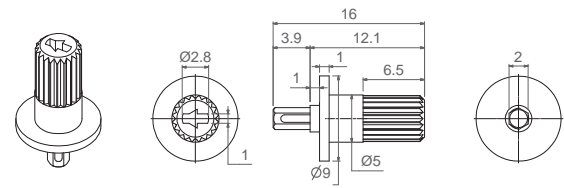
9048 (for 2 ganged potentiometers)



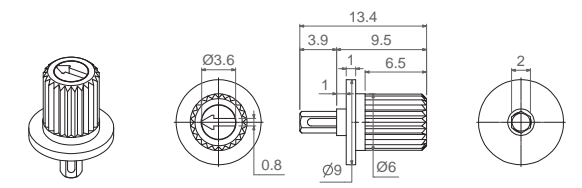
9051 (for 4 ganged potentiometers)



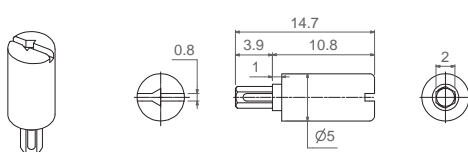
9053



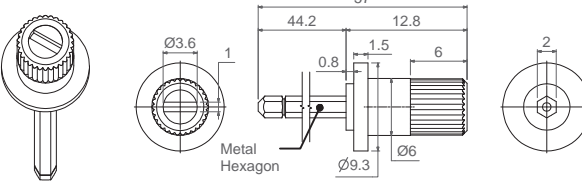
9054



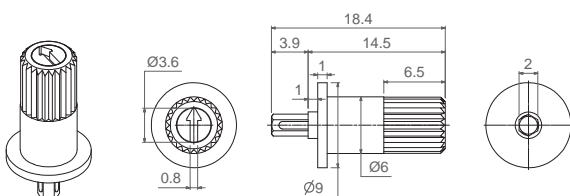
9055



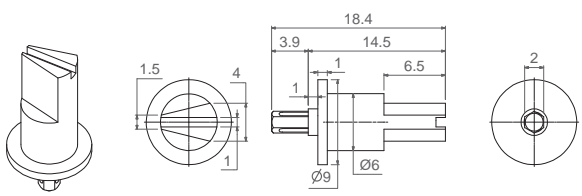
9056 (for 8 ganged potentiometers)



9059



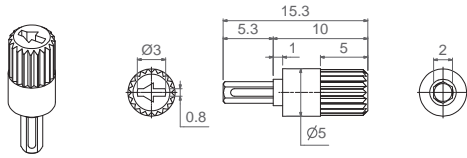
9063



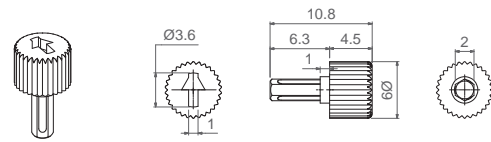
The arrow is in line with the wiper when potentiometer has rotor J (with M rotor, there is a 30° difference).

Specifications on this catalog are for reference only, as they are subject to change without notice.

**9064**

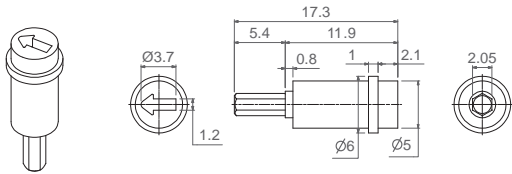


**9067**

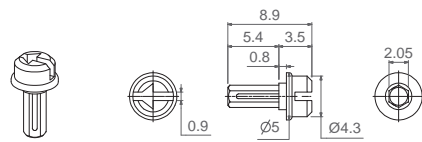


The arrow is in line with the wiper when potentiometer has rotor J (with M rotor, there is a 30° difference).

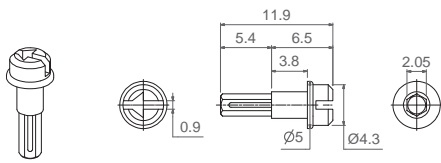
**9070**



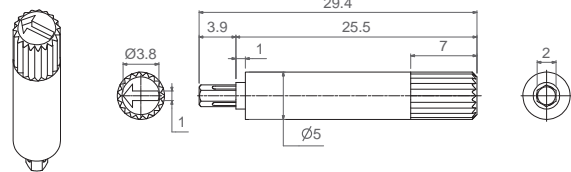
**9071**



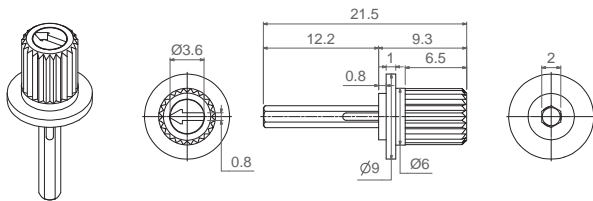
**9072**



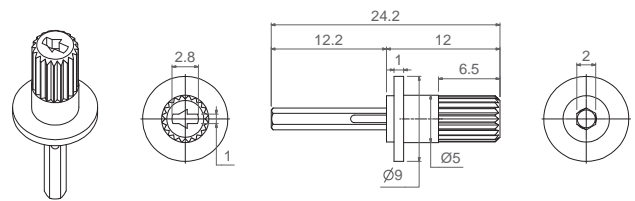
**9073**



**9074 (for 2 ganged potentiometers)**



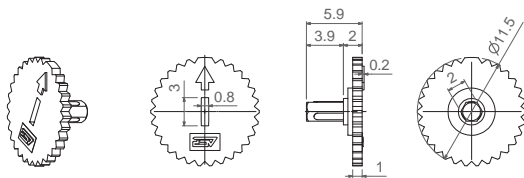
**9076 (for 2 ganged potentiometers)**



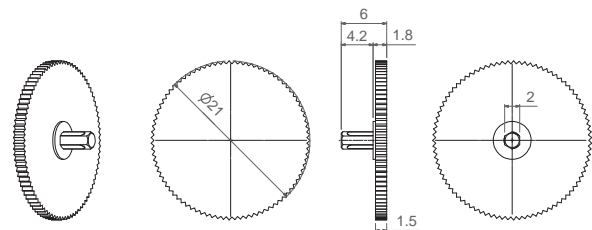
**Thumbwheel**

Thumbwheels are available in different colors (color chart in "how to order" section) and with self-extinguishable property according to UL 94 V-0, under request. Thumbwheels can be mounted on the potentiometers at ACP or sold separately. ACP can study special thumbwheel designs.

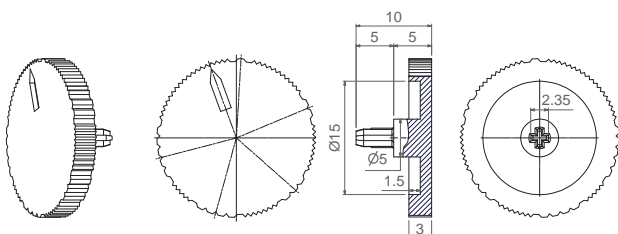
**9002**



**9041**



**9060 (Designed for R rotor)**



**9061**

