

# Pin Header

pitch 2.54mm (0.1") | Dual row | Dip | Board spacer

GPHA202 Series

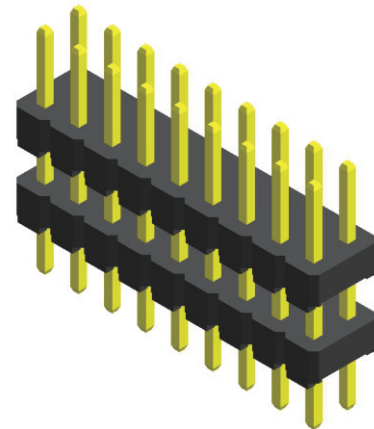
## Specifications

Current Rating : 3.0 Ampere  
 Insulation Resistance : 1000 MΩ Min  
 Dielectric Withstanding : 600V AC  
 Contact Resistance : 20 mΩ Max  
 Operating Temperature : -40°C to +105°C

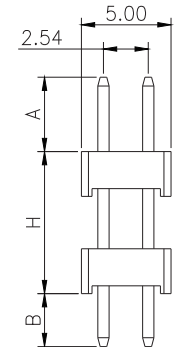
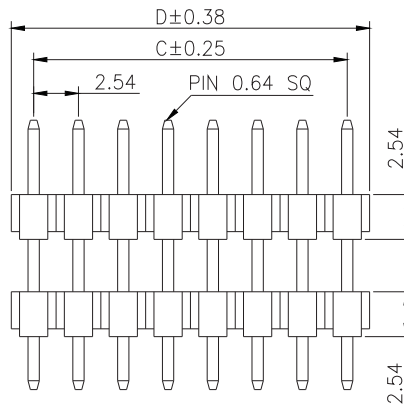
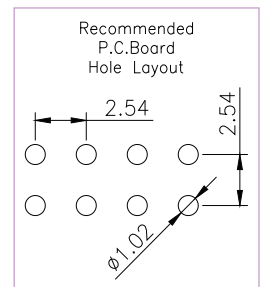
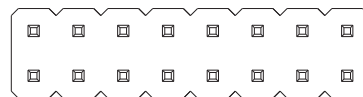
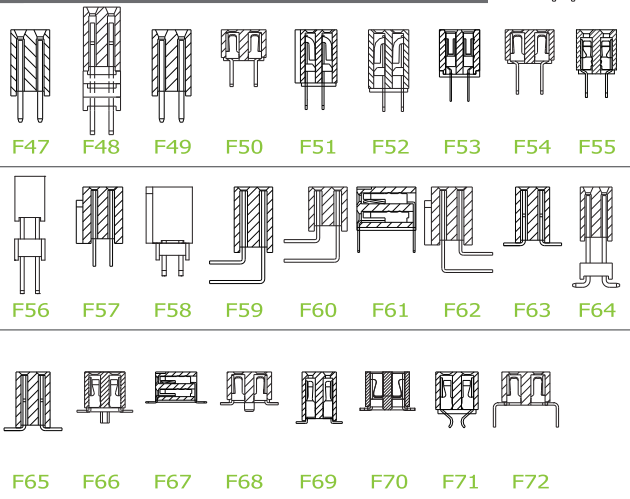
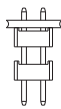
## Materials

Contact Material : Brass  
 Insulation Material : High Temperature Thermoplastic, 94V-0 PBT

All materials must meet Greenconn's requirements for environmental protection.



## Mating with



\* For Coded Dimension Not Inside The Table, Please Refer To "Ordering Information"

No. of Pins/Row	Dimension Information			No. of Pins/Row	Dimension Information			No. of Pins/Row	Dimension Information			No. of Pins/Row	Dimension Information		
	C	D			C	D			C	D			C	D	
02	2.54	5.08		11	25.40	27.94		21	50.80	53.34		31	76.20	78.74	
03	5.08	7.62		12	27.94	30.48		22	53.34	55.88		32	78.74	81.28	
04	7.62	10.16		13	30.48	33.02		23	55.88	58.42		33	81.28	83.82	
05	10.16	12.70		14	33.02	35.56		24	58.42	60.96		34	83.82	86.36	
06	12.70	15.24		15	35.56	38.10		25	60.96	63.50		35	86.36	88.90	
07	15.24	17.78		16	38.10	40.64		26	63.50	66.04		36	88.90	91.44	
08	17.78	20.32		17	40.64	43.18		27	66.04	68.58		37	91.44	93.98	
09	20.32	22.86		18	43.18	45.72		28	68.58	71.12		38	93.98	96.52	
10	22.86	25.40		19	45.72	48.26		29	71.12	73.66		39	96.52	99.06	
				20	48.26	50.80		30	73.66	76.20		40	99.06	101.60	

## Ordering Information

GPHA2	<input type="text" value="XX"/>	-	<input type="text" value="XX"/>	<input type="text" value="XX"/>	<input type="text" value="X"/>	<input type="text" value="XXX"/>	A1BA
	Height Option (H)		No. of Pins per Row	Standard Plating	<input type="text" value="A"/>	Pin Length (A / B / H)	
	<input type="text" value="02"/>		<input type="text" value="02"/>	<input type="text" value="02"/> : Gold Flash		<input type="text" value="001"/> : A=6.00 / B=3.00 / H=10.4	
			<input type="text" value="40"/>	Selective Plating		<input type="text" value="005"/> : A=3.00 / B=3.00 / H=15.0	
				<input type="text" value="01"/> : Tin		For special length requirement	
				<input type="text" value="05"/> : Gold Flash / Tin		Please contact our sales personnel	

## Standard Packaging : Box