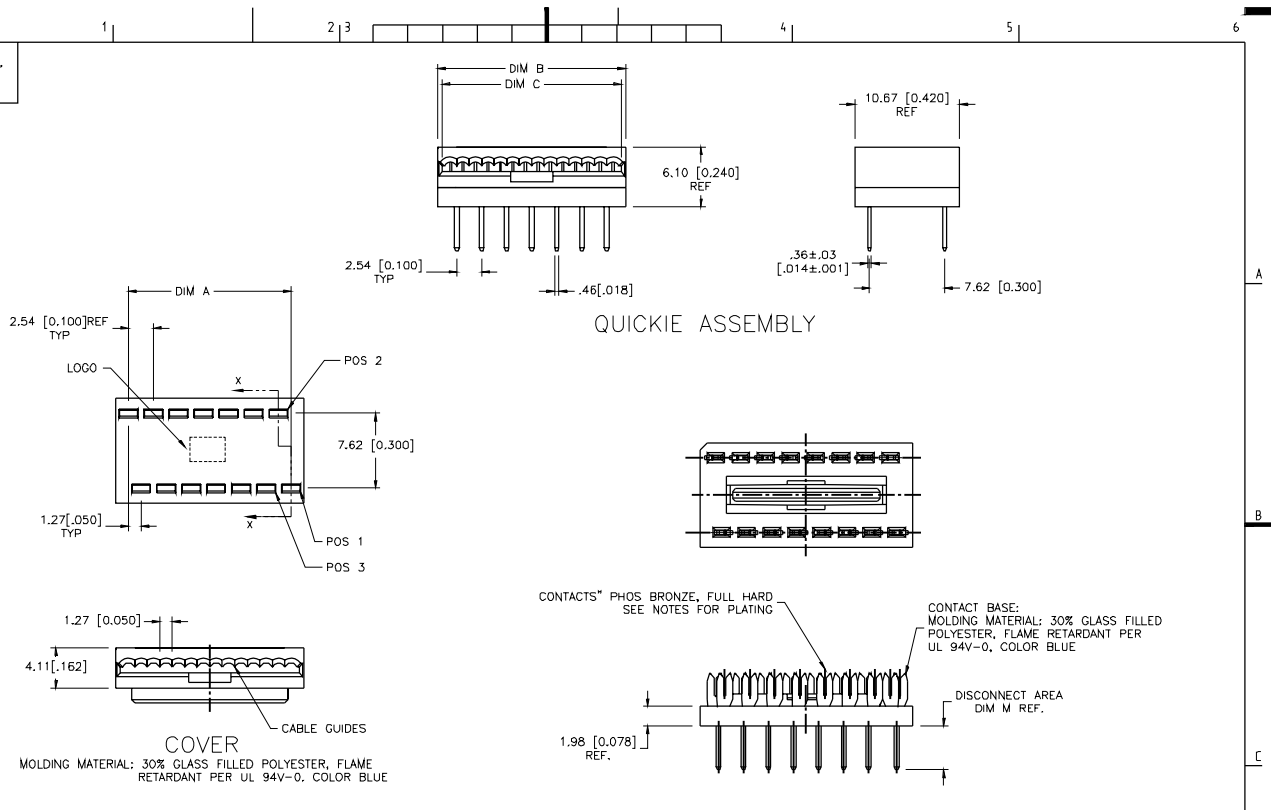


PRODUCT NO.
SEE TABLE



mal'l. code		surface	tolerance	projection	product family
ISO 9002		ISO 1302	ISO 406 ISO 1801	ASME Y14.5	QUICKIE
tolerances unless otherwise specified		linear	XX1.00%/XX10.03	INCH/MM	title
angles		0° ± 2'	XXX1.00%/XXX15.05	scale 5:1	QUICKIE MALE DIP ASSEMBLY
lit	secn no	dr	date	engr	dwg no
U	REDRAW	RLS	6/2/88	R. SEIPLE	65493
V	M05-0178	MHT	6/11/05	engr	sheet 1 of 2
W	M06-0223	ERE	06/12/06	chr	size A3
X	M09-0064	NHT	4/10/09	appr	type
				R. DOUTRICH	Product Customer Drawing
				chr	
				appr	
				R. DOUTRICH	
sheet	revision	x	x		
index	sheet	1	2		

PRODUCT NUMBER	SIZE	DIM A	DIM B	DIM M	CONTACT PLATING	PRODUCT NUMBER	SIZE	DIM A	DIM B	DIM M	CONTACT PLATING
65493-002	2 x 7	16.51/.650	18.24/.718	4.45/.175	NOTE 1	65493-002LF	2 x 7	16.51/.650	18.24/.718	4.45/.175	NOTE 1
-004	2 x 8	19.05/.750	20.78/.818	4.45/.175	NOTE 1	-004LF	2 x 8	19.05/.750	20.78/.818	4.45/.175	NOTE 1
-006	2 x 7	16.51/.650	18.24/.718	4.45/.175	NOTE 2	-006LF	2 x 7	16.51/.650	18.24/.718	4.45/.175	NOTE 4
-008	2 x 8	19.05/.750	20.78/.818	4.45/.175	NOTE 2	-008LF	2 x 8	19.05/.750	20.78/.818	4.45/.175	NOTE 4
-010	2 x 7	16.51/.650	18.24/.718	4.45/.175	NOTE 3	-010LF	2 x 7	16.51/.650	18.24/.718	4.45/.175	NOTE 3
-012	2 x 8	19.05/.750	20.78/.818	4.45/.175	NOTE 3	-012LF	2 x 8	19.05/.750	20.78/.818	4.45/.175	NOTE 3
-014	2 x 7	16.51/.650	18.24/.718	2.67/.105	NOTE 1	-014LF	2 x 7	16.51/.650	18.24/.718	2.67/.105	NOTE 1
-016	2 x 8	19.05/.750	20.78/.818	2.67/.105	NOTE 2	-016LF	2 x 8	19.05/.750	20.78/.818	2.67/.105	NOTE 4
-018	2 x 7	16.51/.650	18.24/.718	2.67/.105	NOTE 2	-018LF	2 x 7	16.51/.650	18.24/.718	2.67/.105	NOTE 4
-020	2 x 8	19.05/.750	20.78/.818	2.67/.105	NOTE 1	-020LF	2 x 8	19.05/.750	20.78/.818	2.67/.105	NOTE 1
-022	2 x 9	21.59/.850	23.32/.918	4.45/.175	NOTE 1	-022LF	2 x 9	21.59/.850	23.32/.918	4.45/.175	NOTE 1
-024	2 x 9	21.59/.850	23.32/.918	4.45/.175	NOTE 2	-024LF	2 x 9	21.59/.850	23.32/.918	4.45/.175	NOTE 4
75493-026	2 x 9	21.59/.850	23.32/.918	4.45/.175	NOTE 3	75493-026LF	2 x 9	21.59/.850	23.32/.918	4.45/.175	NOTE 3

NOTES:

- ① 1.27μ/50μ"MIN Ni UNDERPLATE OVER ENTIRE TERMINAL AND .76μ/30μ"MIN Au IN DISCONNECT AREA ONLY.
- ② 3.81μ/150μ" MIN TIN/LEAD 93/7 OVER ENTIRE TERMINAL
- ③ 1.27μ/50μ"MIN Ni UNDERPLATE OVER ENTIRE TERMINAL AND 1.27/50μ"MIN Au IN DISCONNECT AREA ONLY.
- ④ LEAD FREE OPTION: 3.81μ/150μ" MIN PURE TIN OVER ENTIRE TERMINAL
- ⑤ PART NUMBER WITH "LF" SUFFIX AT THE END ARE LEAD FREE OPTION.
6. IF "LF" P/N THE PRODUCT MEETS EUROPEAN UNION DIRECTIVES AND OTHER COUNTRY REGULATION AS DESCRIBED IN G5-22-008.
7. THE PRODUCT IS NOT INTENDED TO BE EXPOSED TO A MANUFACTURING SOLDER PROCESS.

mat'l. code	surface	tolerance	projection	product family
lit. ecn no. dr. date	ISO 1902	ISO 406 ISO 781		QUICKIE
x.	angles	linear	INCH/MM	title
	0°±2'	xxx1.000/xxx10.0	scale 5:1	QUICKIE MALE DIP ASSEMBLY
	dr. R. SEIPLE	6/2/88		dwg no. sheet 2 of 2 size
	engr. R. DOUTRICH	6/2/88		65493 A3
	chr. R. DOUTRICH	6/2/88		type Product Customer Drawing
	asst. R. DOUTRICH	6/2/88		
sheet index	revision sheet			