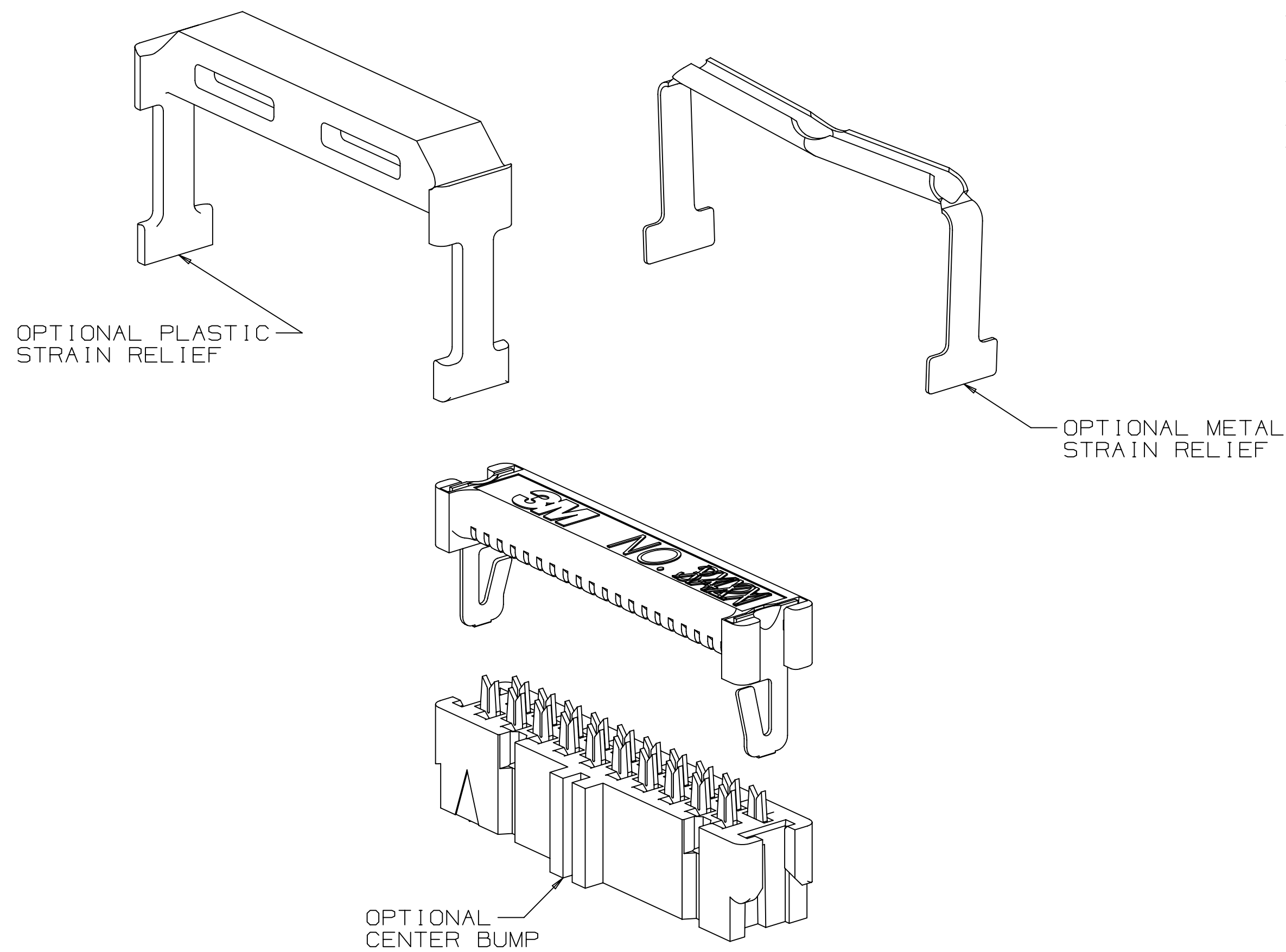


3M™ WIREMOUNT SOCKET, 3000 SERIES
 .100" X .100" FOR .050" PITCH CABLE, (OPTIONAL PLASTIC OR METAL STRAIN RELIEF)



- * INDUSTRY STANDARD IDC SOCKET.
- * POSITIVE LOCKING METAL "J" CLIPS PROVIDE HIGH COVER RETENTION.
- * MATES WITH 3M HEADERS, PLUGS AND PIN STRIPS FOR QUICK CONNECT/DISCONNECT CAPABILITY.
- * OPEN OR CLOSED END COVERS AVAILABLE.
- * ACCEPTS FLAT CABLE OR DISCRETE WIRE.
- * MILITARY POLARIZATION, WITH OR WITHOUT CENTER BUMP.
- * TRANSFER ADHESIVE ON COVERS PROVIDES PRECISION ALIGNMENT BETWEEN CONNECTOR AND CABLES RESULTING IN HIGH YIELD TERMINATIONS.
- * AVAILABILITY OF PULL TAB TO FACILITATE PROPER UNPLUGGING.
- * AVAILABILITY OF 2 TYPES OF STRAIN RELIEF (STANDARD AND LOW PROFILE) TO ISOLATE THE IDC INTERFACE.
- * SET THE STANDARD FOR MIL SPEC AND IEC STANDARDIZATION.
- * AVAILABILITY OF MILITARY AND CENTER BUMP POLARIZATION.

2 PHYSICAL :

INSULATION: MATERIAL: GLASS FILLED POLYESTER (PBT)
 FLAMMABILITY: UL94V-0
 COLOR: GRAY
 CONTACT: MATERIAL: COPPER ALLOY
 J-CLIP: STAINLESS STEEL
 PLATING: UNDER PLATING AND U-SLOT: 100µ" [2.54µm] AVG. NICKEL-OVERALL
 WIPING AREA: 30µ" [0.76µm] AVG. GOLD
 WIRE ACCOMMODATION: 26 AND 28 AWG SOLID AND STRANDED
 MARKINGS: 3M LOGO, PART IDENTIFICATION NUMBER, ORIENTATION TRIANGLE

2 ELECTRICAL :

CURRENT RATING:

	1 LINE	6 ADJACENT LINES	ALL LINES
28 AWG	4.50	1.75	1.00
26 AWG	4.75	2.00	1.00

RATING CONDITIONS: EIA-364-070 METHOD 2, 30°C MAXIMUM TEMPERATURE RISE, 20% DERATED. REFERENCE APPROPRIATE 3M PRODUCT SPECIFICATION FOR CURRENT DERATING CURVES.

INSULATION RESISTANCE: >1 X 10⁹Ω AT 500 V_{DC}
 WITHSTANDING VOLTAGE: 1,000V_{RMS} AT SEA LEVEL

2 ENVIRONMENTAL :

TEMPERATURE RATING: -55°C TO +105°

- NOTES
- REGULATORY INFORMATION: VISIT 3M.com/regs
 - UNLESS OTHERWISE NOTED, REFERENCES TO INDUSTRY SPECIFICATIONS ARE INTENDED TO INDICATE SUBSTANTIAL COMPLIANCE TO THE MATERIAL ELEMENTS OF THE SPECIFICATION. SUCH REFERENCES SHOULD NOT BE CONSTRUED AS A GUARANTEE OF COMPLIANCE TO ALL REQUIREMENTS IN A GIVEN SPECIFICATION.
 - THIS POLARIZING GROOVE IS NON-EXISTENT ON 3863, 3868, 3385 AND 3473 SERIES.
 - THIS POLARIZING GROOVE IS NON-EXISTENT ON 3863 SERIES FOR POLARIZATION OPTION 6.
 - THE LOW PROFILE STRAIN RELIEF CAN BE USED WITH THE 4600 SERIES PLUG AND .100 X .100 HEADERS WITH EJECTOR LATCHES. THE LATCHES WILL ONLY FUNCTION AS AN EJECTOR.
 - TAPERED PIN TIP CONFIGURATION RECOMMENDED.
 - DIMENSION MEASURED AT TIP OF PINS.

ORDERING INFORMATION SOCKETS

XXXX - XXXX

- COVER: _____
 6 = OPEN END (FOR DAISY CHANING OR BUSSING)
 7 = CLOSED END (FOR END CABLE TERMINATION) (10 TO 60 POSITION ONLY)
- SOCKET SERIES: (SEE TABLE 1)
- STRAIN RELIEF:
 00 = NO STRAIN RELIEF
 XX = CONTACT QUANTITY FOR PLASTIC STRAIN RELIEF (10 THRU 60 POSITION (I.E. 50 FOR A 50 POS))
 05 = PLASTIC STRAIN RELIEF 6 AND 8 POSITION
 06 = METAL STRAIN RELIEF 10 THRU 60 POSITION
- POLARIZATION:
 0 = MILITARY (DUAL SLOT)
 6 = CENTER BUMP AND MILITARY

(ORDER SEPARATELY)
 SEE TS-0720

ORDERING INFORMATION STRAIN RELIEF

3448 - X0XX

- TYPE: _____ XX = CONTACT QUANTITY SEE TABLE 1 (I.E. 50 FOR A 50 POSITION STRAIN RELIEF)
- 2 = METAL, LOW PROFILE 10 THRU 60 POSITION (SEE NOTE 3)
 3 = PLASTIC

ORDERING INFORMATION KEYING PLUG

3435 - 0000

ORDERING INFORMATION PULL TABS

3490 - X

NOTE:
 ASSEMBLY TOOLS:
 3M PRESS (OR EQUIVALENT): 3640
 3M LOCATOR PLATE: 3443-94
 3M PLATTIN: 3442-9

DIMENSIONS: INCHES [MM]
 [MM] IS REF. ONLY

DESIGN REFERENCE	NEXT ASSEMBLY	REV	ECO	ISSUE DATE AND DESCRIPTION	DRFT	CHKD
				JUN 21, 2021	JNC	SAN
DIVISION		DIVISION CODE		DATE		
DO NOT SCALE DRAWING		SCALE		DATE		
THIRD ANGLE PROJECTION		TOLERANCES EXCEPT AS NOTED		DATE		
MAX SURFACE ROUGHNESS		INCHES		DATE		
MARKED ONLY		MILLIMETERS		DATE		
		ANGLES		DATE		
		CAGE NUMBER		DATE		
		DRAWING NO.		DATE		
		MODEL		DATE		

3M ELECTRONICS MATERIALS SOLUTIONS DIVISION
 INTERCONNECT SOLUTIONS
<http://www.3M.com/interconnect>

3M IS A TRADEMARK OF 3M COMPANY.
 FOR TECHNICAL, SALES OR ORDERING INFORMATION CALL 800-225-5373

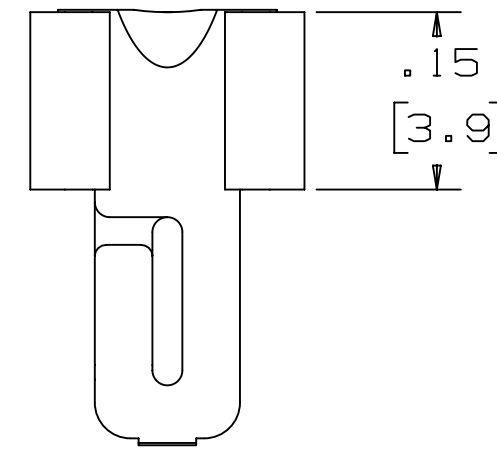
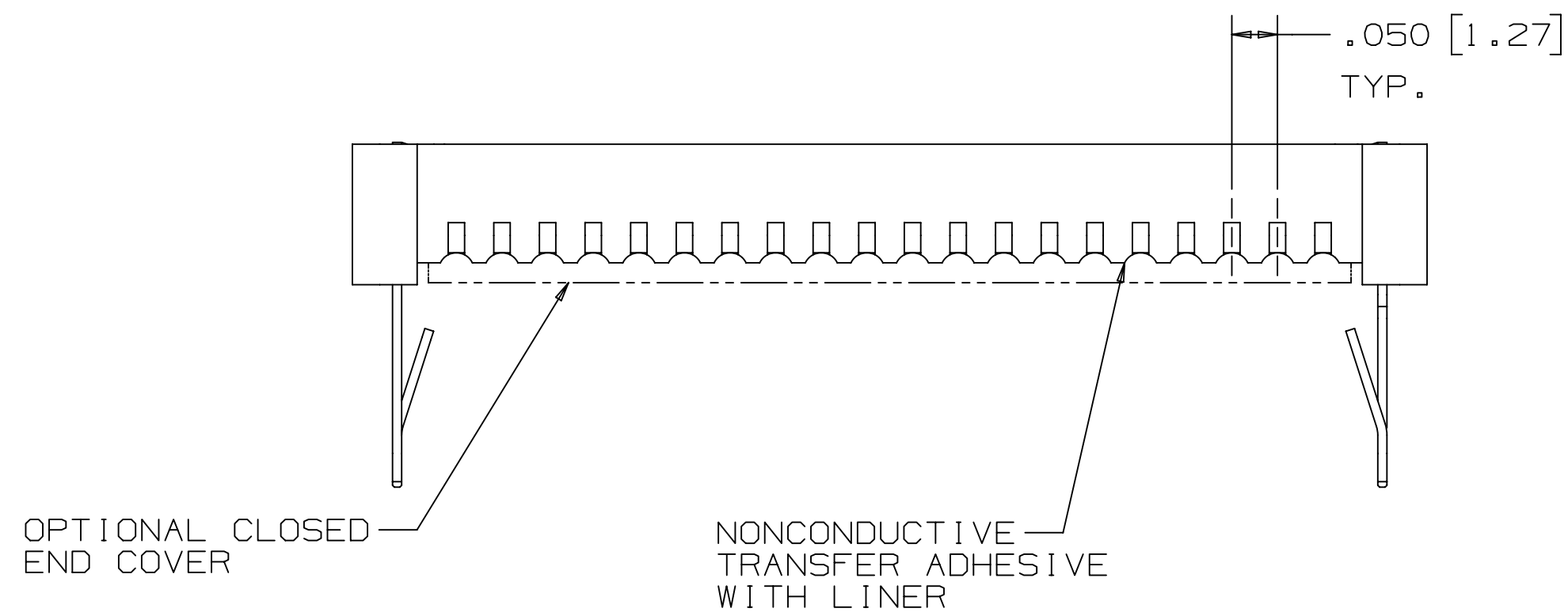
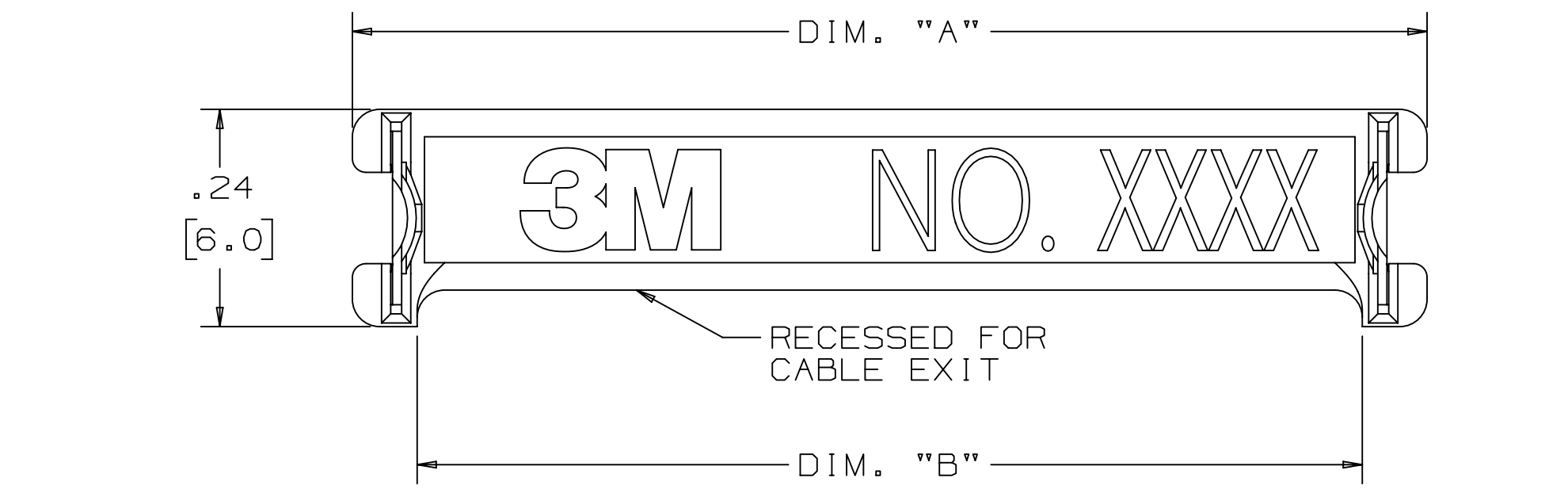
UL
 UL FILE NO: E68080

78-5100-0718-6
 DRAWING NUMBER

A

SHT 1 OF 4

3M™ WIREMOUNT SOCKET, 3000 SERIES
 .100" X .100" FOR .050" PITCH CABLE, (OPTIONAL PLASTIC OR METAL STRAIN RELIEF)



COVER ASSEMBLY

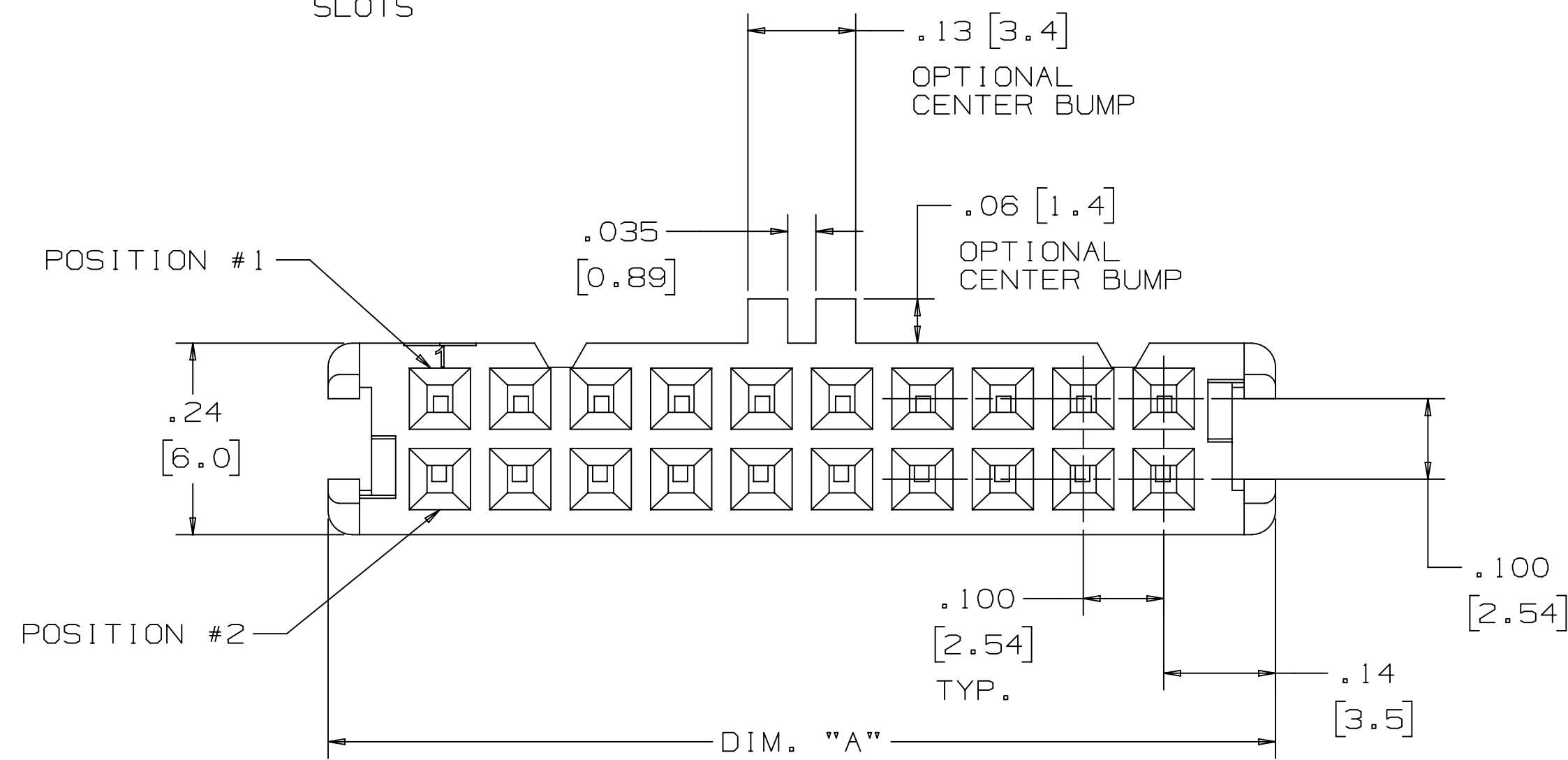
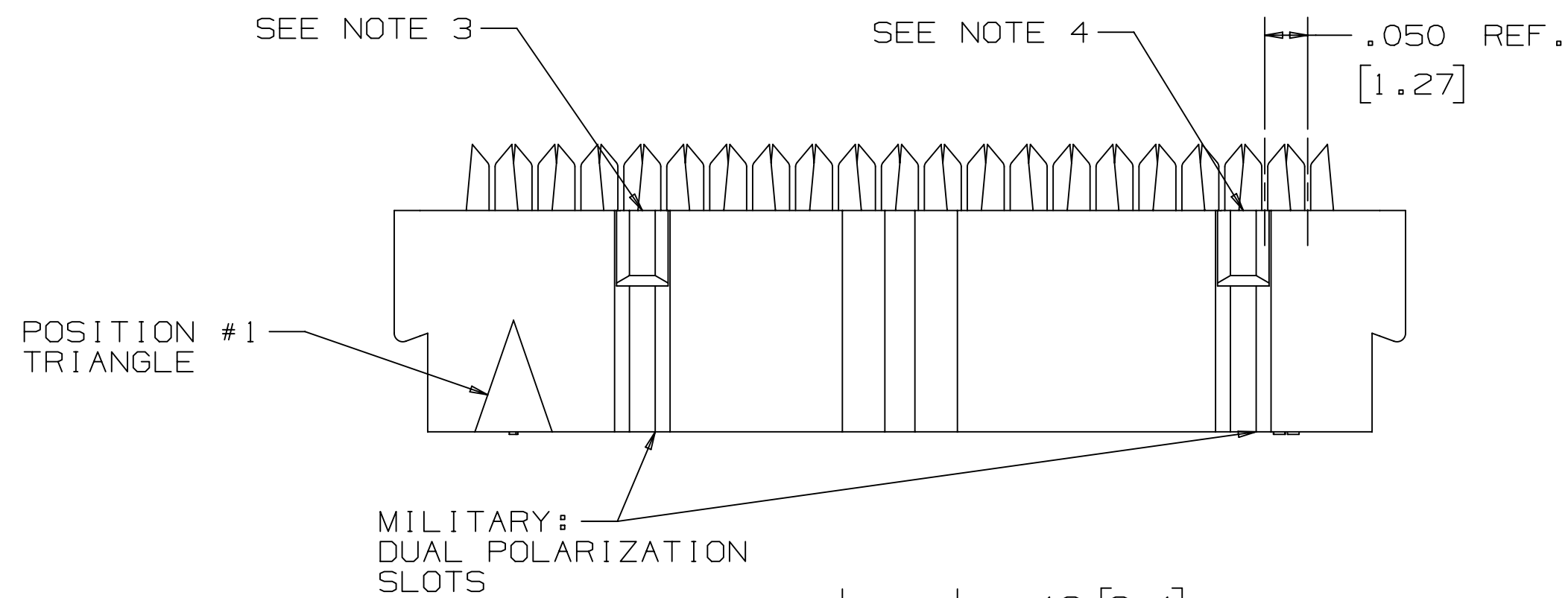


TABLE 1			
CONTACT QTY.	SOCKET SERIES	DIM. "A"	DIM. "B"
06	3863	0.48 [12.2]	0.34 [8.6]
08	3868	0.58 [14.7]	0.44 [11.2]
10	3473	0.68 [17.3]	0.54 [13.7]
14	3385	0.88 [22.4]	0.74 [18.8]
16	3452	0.98 [24.9]	0.84 [21.3]
20	3421	1.18 [30.0]	1.04 [26.4]
24	3626	1.38 [35.1]	1.24 [31.5]
26	3399	1.48 [37.6]	1.34 [34.0]
30	3419	1.68 [42.7]	1.54 [39.1]
34	3414	1.88 [47.8]	1.74 [44.2]
36	9436	1.98 [50.3]	1.84 [46.7]
40	3417	2.18 [55.4]	2.04 [51.8]
44	9444	2.38 [60.5]	2.24 [56.9]
50	3425	2.68 [68.1]	2.54 [64.5]
60	3334	3.18 [80.8]	3.04 [77.2]

DESIGN REFERENCE	NEXT ASSEMBLY	REV	ECO	ISSUE DATE AND DESCRIPTION	DRFT	CHKD
				JUN 21, 2021	JNC	SAN
DIVISION		DIVISION CODE		DATE		
DO NOT SCALE DRAWING		EMSD		JUN 21, 2021		
THIRD ANGLE PROJECTION		TOLERANCES EXCEPT AS NOTED		DATE		
INTERPRET PER ASME Y14.5 - 2018		INCHES		DATE		
MAX SURFACE ROUGHNESS		MILLIMETERS		DATE		
MARKED ONLY		0 ±		DATE		
		.00 ± .1		DATE		
		.000 ± .01		DATE		
		.0000 ± .005		DATE		
		.0000 ± .0002		DATE		
		0 ±		DATE		
		.00 ±		DATE		
		.000 ±		DATE		
		ANGLES ±		DATE		

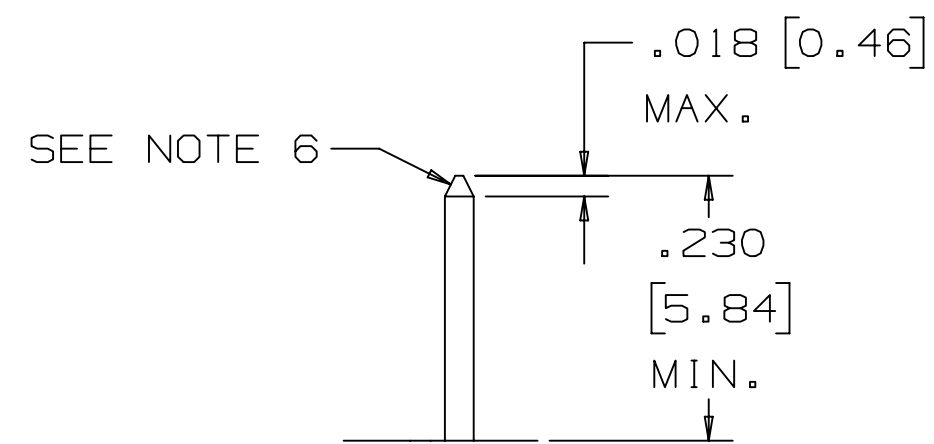
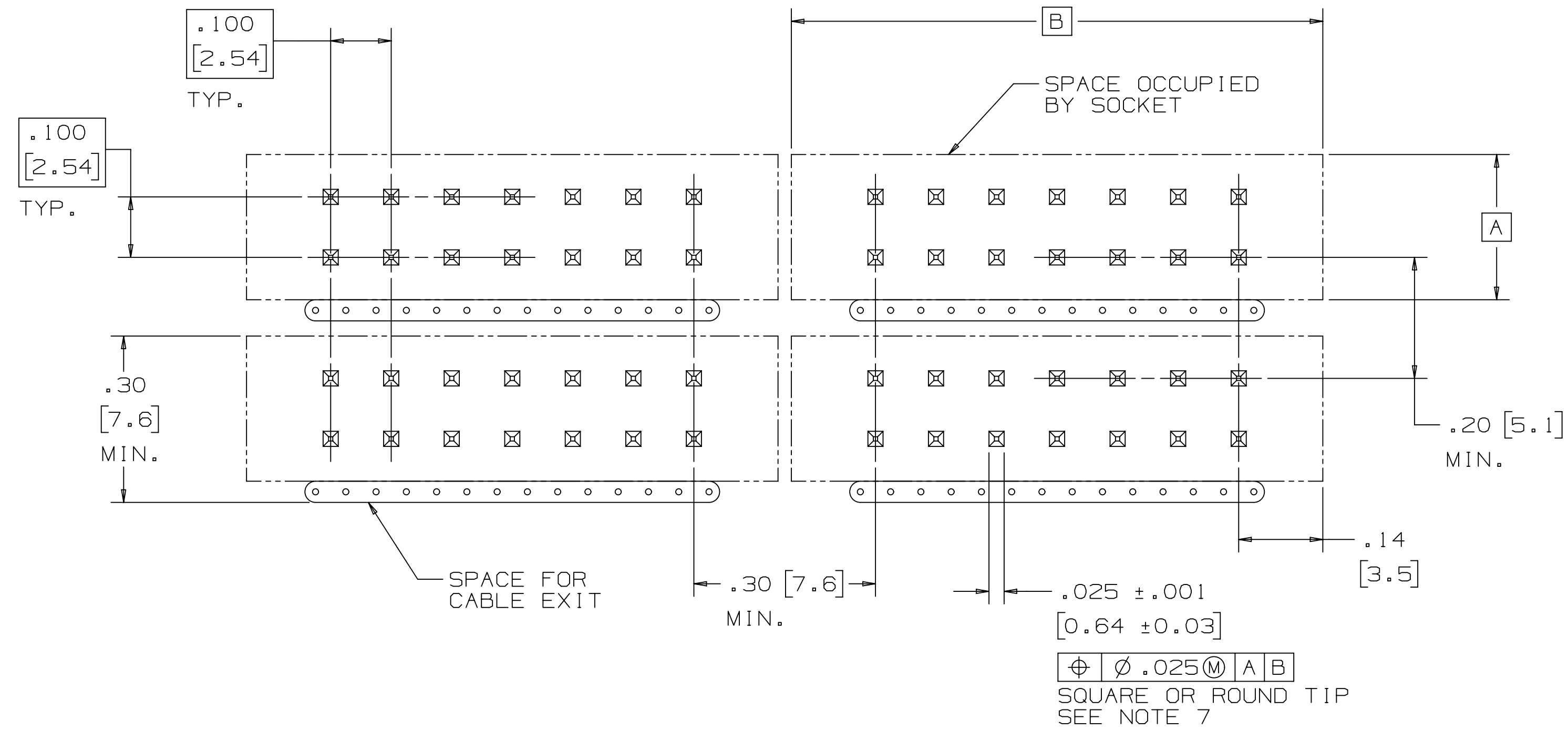
97305	JUN 21, 2021	JNC	SAN
ECO	ISSUE DATE AND DESCRIPTION	DRFT	CHKD
CASTIGLIONE	JUN 21, 2021		
	DATE	DATE	DATE
	DATE	DATE	DATE
	DATE	DATE	DATE

DO NOT SCALE DRAWING	SCALE 6-1	TOLERANCES EXCEPT AS NOTED
THIRD ANGLE PROJECTION	INCHES	MILLIMETERS
INTERPRET PER ASME Y14.5 - 2018	0 ±	.00 ± .1
MAX SURFACE ROUGHNESS	.00 ±	.000 ± .01
MARKED ONLY	.000 ±	.0000 ± .005
	.0000 ±	.0000 ± .0002
	0 ±	0 ±
	.00 ±	.00 ±
	.000 ±	.000 ±
	ANGLES ±	ANGLES ±

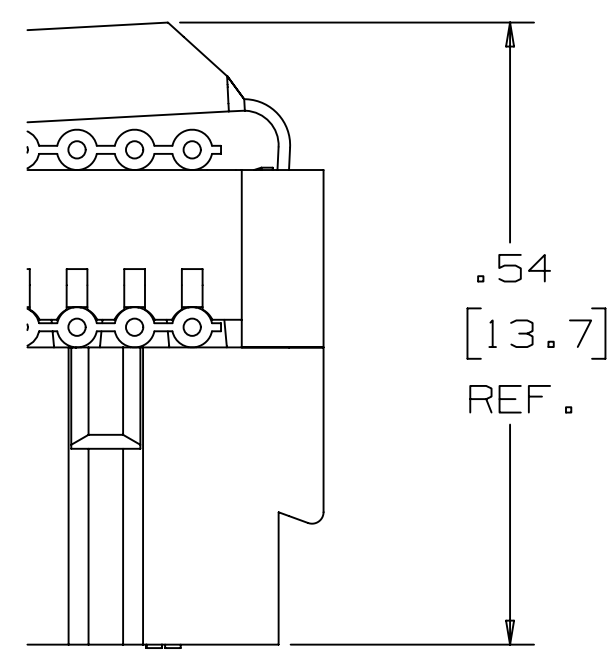
TITLE	WIREMOUNT SOCKET, .100" X .100", .050" PITCH CABLE
CAGE NUMBER	D78-5100-0718-6
SIZE	
DRAWING NO.	
REV.	G
MODEL	3000
DET.	IS1s
YES	NO
SHT 2 OF 4	

DRAWING NUMBER: 78-5100-0718-6 REVISION: G

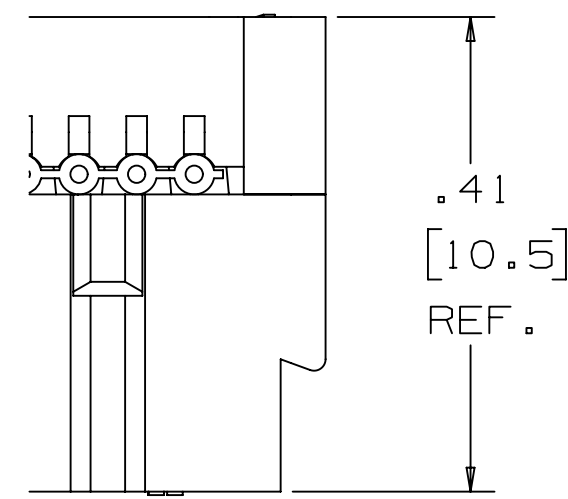
3M™ WIREMOUNT SOCKET, 3000 SERIES
 .100" X .100" FOR .050" PITCH CABLE, (OPTIONAL PLASTIC OR METAL STRAIN RELIEF)



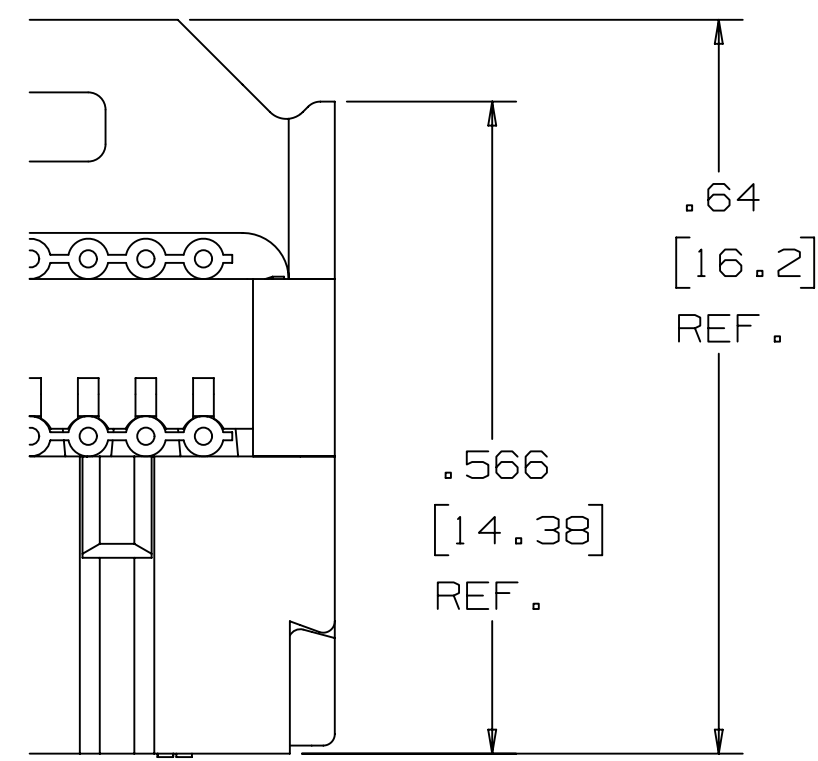
RECOMMENDED PIN PATTERN
 FOR STACKED CONFIGURATIONS



ASSEMBLED HEIGHT
 WITH METAL PROFILE
 STRAIN RELIEF



ASSEMBLED HEIGHT
 WITHOUT STRAIN RELIEF



ASSEMBLED HEIGHT
 WITH PLASTIC
 STRAIN RELIEF

DESIGN REFERENCE		NEXT ASSEMBLY		REV	ECO	ISSUE DATE AND DESCRIPTION	DRFT	CHKD
G 97305		JUN 21, 2021		JNC	SAN	REVISED AND REDRAWN		
DRFT CASTIGLIONE		DATE JUN 21, 2021		MFG	DATE			
CHKD		DATE		APPR	DATE			
DIVISION		DIVISION CODE		© 3M COPYRIGHT 2021 This document and the information it contains are 3M property and may not be reproduced or further distributed without 3M permission, or used or disclosed other than for 3M authorized purposes. All rights reserved.				
DO NOT SCALE DRAWING		SCALE 6/1		TOLERANCES EXCEPT AS NOTED		3M 3M Center St. Paul, MN 55144		
THIRD ANGLE PROJECTION		INCHES		MILLIMETERS		TITLE WIREMOUNT SOCKET, .100" X .100", .050" PITCH CABLE		
MAX. SURFACE ROUGHNESS		ALL SURFACES		MARKED ONLY		CAGE NUMBER D78-5100-0718-6		
MODEL		3000		REV.		G		

78-5100-0718-6
DRAWING NUMBER
G
REVISION