



## SPECIFICATIONS

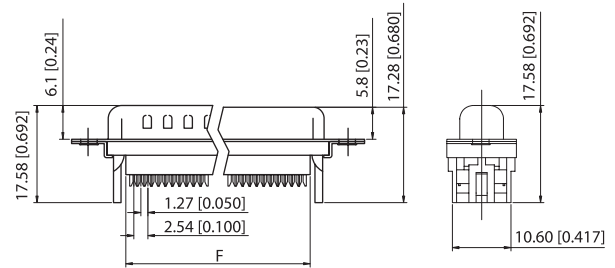
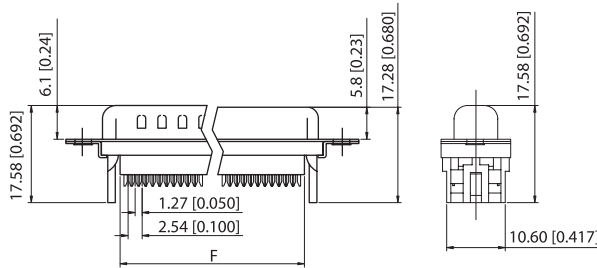
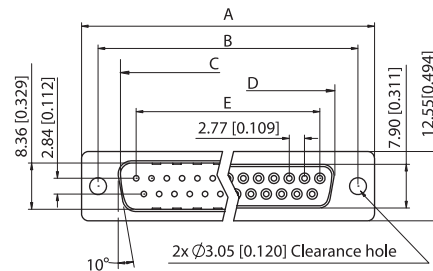
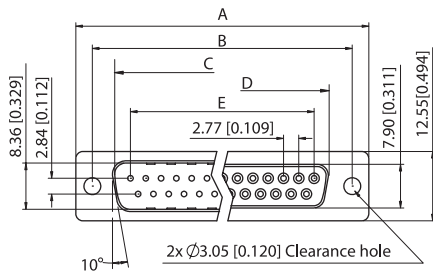
### Material

- Insulator: Glass-Filled Thermoplastic PBT, UL 94V-0
- Contact: Brass
- Clinch Nut: Brass, Nickel Plated
- Screwlock: Steel, Nickel Plated

### Electrical

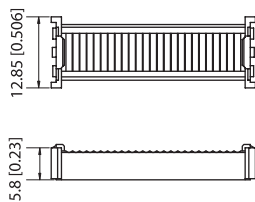
- Contact Resistance: 20m OHMs Max at 1 Amp DC.
- Insulation Resistance: 1000 MagOHMs at 500 VDC.
- Dielectric withstanding Voltage: 1000 Vac/Rms 60Hz for 1 Minute
- Current Rating: 3 Amps
- Voltage Rating: 250 Vac/Rms 60Hz

## DIMENSIONS

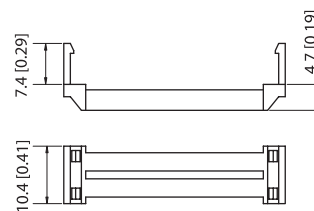


Without Insulator Support

With Insulator Support



COVER

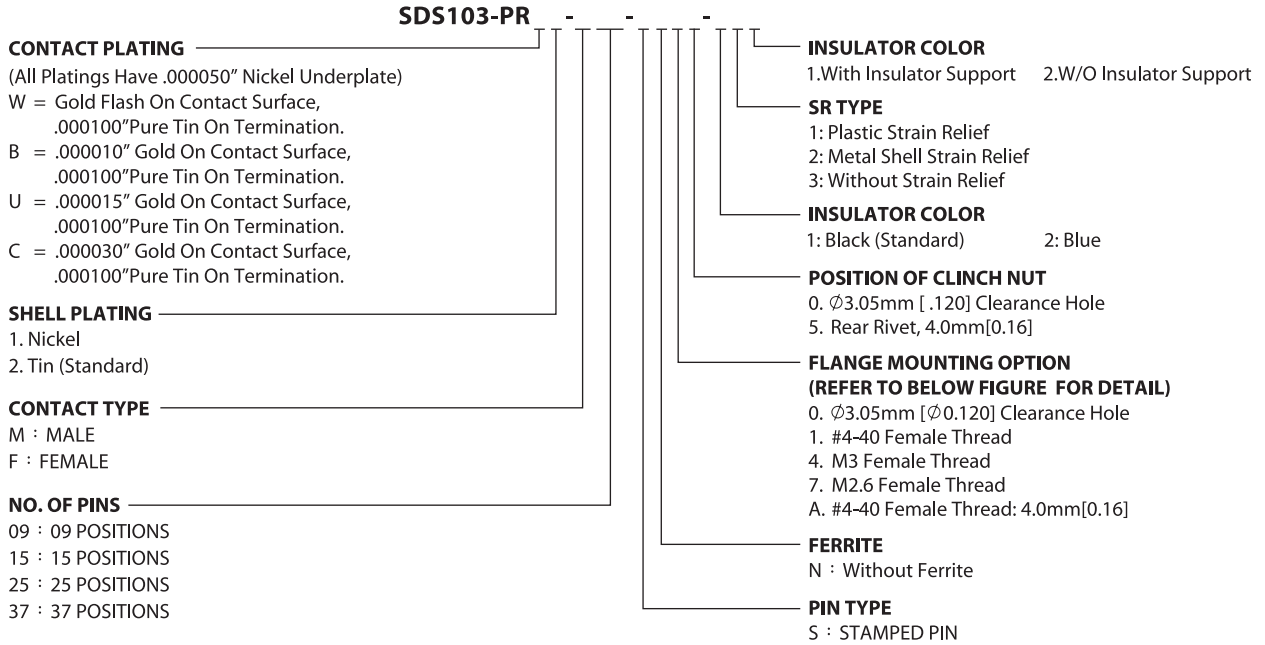


Strain Relief  
Optional See P/N Coding

Positions	A		B		C		D		E		F	
	mm	inch	mm	inch	mm	inch	mm	inch	mm	inch	mm	inch
<b>9</b>	30.81	1.213	24.99	0.984	16.92	0.666	16.33	0.643	11.08	0.436	19.20	0.756
<b>15</b>	39.20	1.543	33.30	1.311	25.25	0.994	24.70	0.972	19.39	0.763	27.70	1.091
<b>25</b>	53.05	2.088	47.04	1.852	38.96	1.534	38.40	1.512	33.24	1.309	41.10	1.618
<b>37</b>	69.40	2.732	63.50	2.500	55.42	2.182	54.80	2.158	49.86	1.963	57.30	2.256

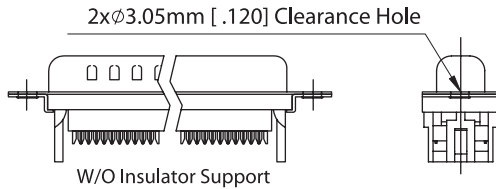


**PART NUMBER OPTIONS**

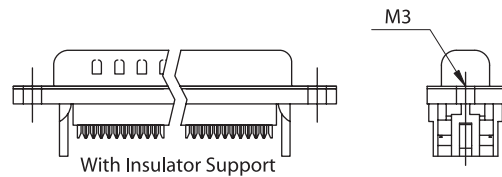


**FLANGE MOUNTING OPTION** Consult sales or factory for other mounting style options

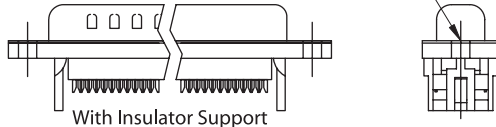
**0. 3.05mm [.120] Clearance Hole**



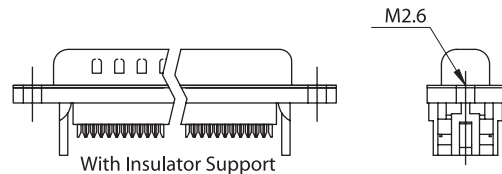
**4. M3 Female Thread**



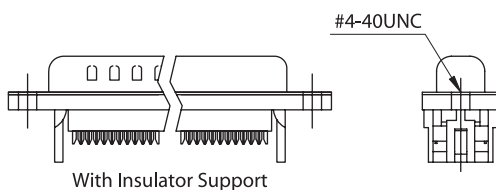
**2. 3.05mm [.120] Clearance Hole**



**7. M2.6 Female Thread**



**1. #4-40 Female Thread**



**A. #4-40 Female Thread: 4.0mm[0.16]  
(Rear Rivet, 4.0mm[0.16])**

