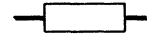
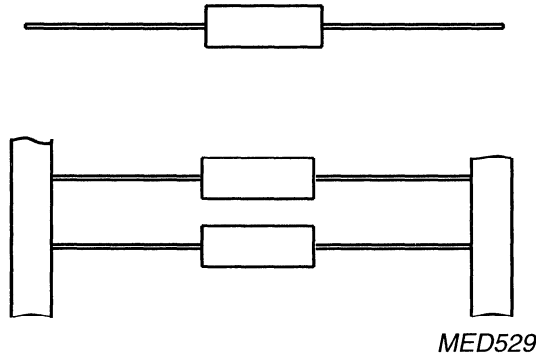


**POLYSTYRENE
film foil capacitors**

KS 424 .. 431



KS AXIAL CAPACITORS



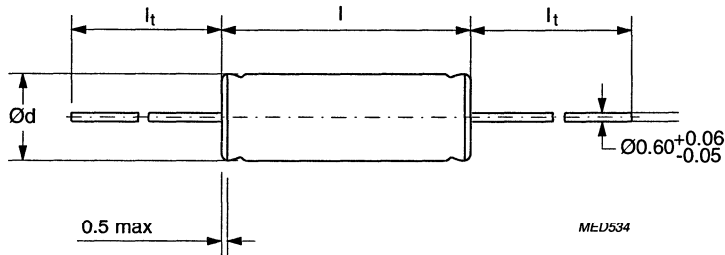
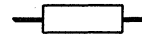
QUICK REFERENCE DATA

Capacitance range	47 to 39 000 pF
Capacitance tolerance	±5%, ±2%, ±1%
Rated voltage U_{Rdc}	63 V, 160 V, 250 V, 630 V
Climatic category	40/085/21
Rated temperature	85 °C
Reference specification	IEC 384-7
Stability class	Class 3

<p>FEATURES</p> <ul style="list-style-type: none"> • Supplied loose in box and taped on reel. 	<p>APPLICATIONS</p> <ul style="list-style-type: none"> • For use in circuits where close tolerance, reliability and low losses are of prime importance, e.g. tuned circuits, filter networks, timing networks, etc.
---	---

**POLYSTYRENE
film foil capacitors**

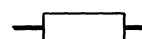
KS 424 / 428



SPECIFIC REFERENCE DATA FOR 63 V DC

Tangent of loss angle	at 1 kHz	at 100 kHz	at 1 MHz
1000 pF < C ≤ 10 000 pF	≤5·10 ⁻⁴	≤10·10 ⁻⁴	-
10 000 pF < C ≤ 20 000 pF	≤5·10 ⁻⁴	≤15·10 ⁻⁴	-
C > 20 000 pF	≤5·10 ⁻⁴	≤25·10 ⁻⁴	-
R between terminations	>100 000 MΩ		

SMALLEST PACKING QUANTITIES (SPQ)	loose in box	taped on reel
	SPQ	SPQ
3.8 x 11.0	400	3000
4.0 x 11.0	400	2500
4.5 x 11.0	300	2500
5.0 x 11.0	250	1500
5.0 x 15.0	300	1500
5.5 x 15.0	250	1500
6.0 x 15.0	250	1500
6.5 x 15.0	200	1000
7.0 x 15.0	150	1000
7.5 x 15.0	150	1000
8.0 x 15.0	150	1000

POLYSTYRENE
film foil capacitors
KS 424 / 428

 $U_{Rdc} = 63 \text{ V}$
 $U_{Rac} = 25 \text{ V}$
loose and taped

Cap. (E-24) (pF) *	$d_{max} \times l_{max}$ (mm)	mass (g)	CATALOGUE NUMBER					
			2222 424			2222 428		
			loose in box			taped on reel		
			C-tol ±5%	C-tol ±2%	C-tol ±1%	C-tol ±5%	C-tol ±2%	C-tol ±1%
$l_t = 30 \text{ mm}$								
2000	3.8 x 11.0	0.3	22002	32002	42002	62002	72002	82002
2200			22202	32202	42202	62202	72202	82202
2400			22402	32402	42402	62402	72402	82402
2700	4.0 X 11.0	0.4	22702	32702	42702	62702	72702	82702
3000			23002	33002	43002	63002	73002	83002
3300			23302	33302	43302	63302	73302	83302
3600			23602	33602	43602	63602	73602	83602
3900			23902	33902	43902	63902	73902	83902
4300	4.5 x 11.0	0.5	24302	34302	44302	64302	74302	84302
4700			24702	34702	44702	64702	74702	84702
5100			25102	35102	45102	65102	75102	85102
5600			25602	35602	45602	65602	75602	85602
6200			26202	36202	46202	66202	76202	86202
6800	26802	36802	46802	66802	76802	86802		
$l_t = 28 \text{ mm}$								
7500	5.0 x 15.0	0.6	27502	37502	47502	67502	77502	87502
8200			28202	38202	48202	68202	78202	88202
9100			29102	39102	49102	69102	79102	89102
10000			21003	31003	41003	61003	71003	81003
11000	5.5 x 15.0	0.8	21103	31103	41103	61103	71103	81103
12000			21203	31203	41203	61203	71203	81203
13000			21303	31303	41303	61303	71303	81303
15000			21503	31503	41503	61503	71503	81503
16000	6.0 x 15.0	1.1	21603	31603	41603	61603	71603	81603
18000			21803	31803	41803	61803	71803	81803
20000			22003	32003	42003	62003	72003	82003
22000	6.5 x 15.0	1.3	22203	32203	42203	62203	72203	82203
24000			22403	32403	42403	62403	72403	82403
27000	7.0 x 15.0	1.5	22703	32703	42703	62703	72703	82703
30000			23003	33003	43003	63003	73003	83003
33000	7.5 x 15.0	1.9	23303	33303	43303	63303	73303	83303
36000			23603	33603	43603	63603	73603	83603
39000	8.0 x 15.0	2.0	23903	33903	43903	63903	73903	83903

* Besides the values of the E24-series as quoted, intermediate values of the E48-series (with a tolerance $\pm 2\%$ or $\pm 1\%$) and of the E96-series (with a tolerance $\pm 1\%$) are available. The specifications of these intermediate values are equal to the specifications of the next higher value of the E24-series.

On special request, these capacitors are also available in lacquered version. (See table composition of catalogue numbers for lacquered versions).