

PIEZOELECTRIC BUZZER



Piezoelectric Buzzer

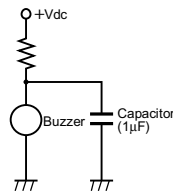
This is unified piezoelectric sounder which has piezoelectric diaphragm of 3 terminals connected to self drive circuit, and it easily generates sound with only a DC power supply (3.0-20Vdc). Using suitably designed resonant system, this type can be used where large sound volumes are needed.

APPLICATIONS

- Gas alarms, burglar alarms.
- Air conditioners, microwave ovens and various types of microcomputer controlled home-electronic appliances.
- Automobile speed alarms, navigators, car stereos and other automobile equipment.
- Toys, games, and other simple electronic devices such as teaching aids.

CIRCUITS

This type of piezoelectric buzzer is built in complete circuit ; so there is no need for another circuit for generating sound. Resistors should not be connected in series to the power supply as this will produce irregular oscillation. When resistor is necessary to control sound volume, use capacitor (1μF) parallel with the buzzer together.



NOTICE

- Please pay attention to following points in order piezoelectric sounder to maintain stable oscillation.
- (1) Do not cover the hole with tape or other obstacles.
 - (2) There should not be any obstacle within 15mm from top of buzzer.
 - (3) Please use these piezoelectric buzzer within the limit of rated voltage. Consult us if higher voltage type is required.

SPECIFICATIONS

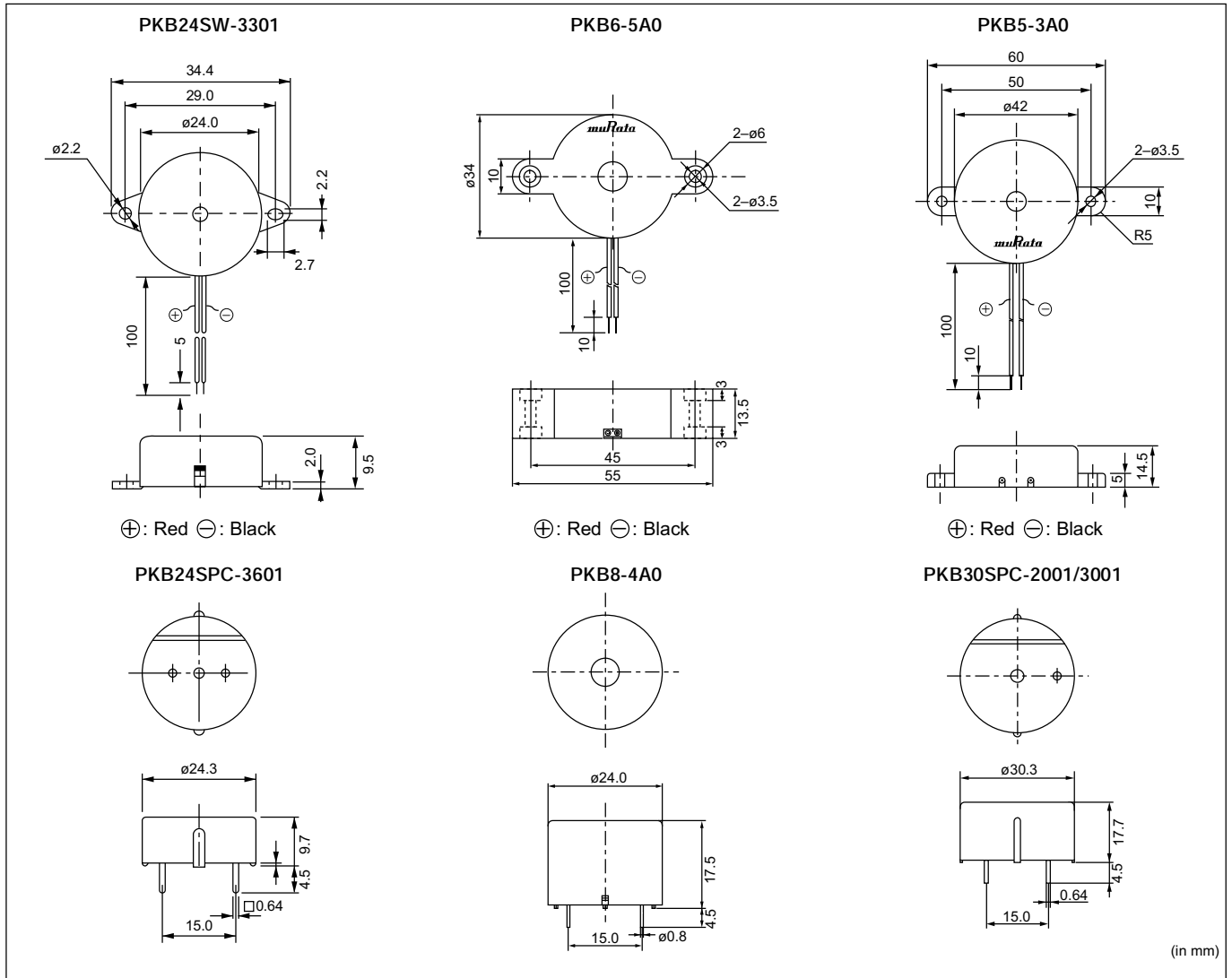
Lead Wire Type

Part Number	EIAJ Part Number	Sound Pressure Level [dB] (12Vdc, 10cm)	Oscillating Frequency [kHz]	Current Consumption [mA]	Operating Voltage Range [Vdc]	Operating Temp. Range [°C]	Storage Temp. Range [°C]	Packaging Quantity [pcs]
PKB24SW-3301	PB-RWD-C24-33	80 min.	3.3±0.5	12 max.	3.0 to 20.0	-20 to +70	-30 to +80	200
PKB6-5A0	PB-RWD-C34-47	95 min.	4.7±0.7					25
PKB5-3A0	PB-RWD-C42-28		2.8±0.5					

Pin Type

Part Number	EIAJ Part Number	Sound Pressure Level [dB] (12Vdc, 10cm)	Oscillating Frequency [kHz]	Current Consumption [mA]	Operating Voltage Range [Vdc]	Operating Temp. Range [°C]	Storage Temp. Range [°C]	Packaging Quantity [pcs]
PKB24SPC-3601	PB-RPD-C24-36	90 min.	3.6±0.5	16 max.	3.0 to 15.0	-20 to +70	-30 to +80	650
PKB8-4A0	PB-RPD-C24-38	95 min.	3.8±0.5	13 max.	3.0 to 20.0			90
PKB30SPC-2001	PB-RPD-C30-20	92 min.	2.0±0.4	15 max.	3.0 to 15.0			80
PKB30SPC-3001	PB-RPD-C30-27		2.7±0.4					

■ DIMENSIONS



■ VOLTAGE:SOUND PRESSURE LEVEL / VOLTAGE:CURRENT CONSUMPTION CHARACTERISTICS (Measuring Distance : 10cm)

